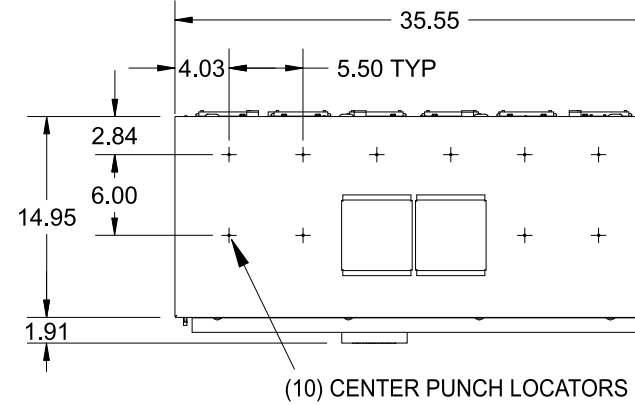


Catalog Numbers

Catalog No.	Breaker Rating(Max)	Breaker Type	Interrupting Rating(Max)
WBT324X700NH	700A	MXD6	65,000
WBT324X700UNH	700A	HMXD6	100,000
WBT324X800NH	800A	MXD6	65,000
WBT324X800UNH	800A	HMXD6	100,000
WBT324X900NH	900A	NXD6	65,000
WBT324X900UNH	900A	HNXD6	100,000
WBT324X1000NH	1000A	NXD6	65,000
WBT324X1000UNH	1000A	HNXD6	100,000
WBT324X1200NH	1200A	NXD6	65,000
WBT324X1200UNH	1200A	HNXD6	100,000

Features and Ratings

- MODULE RATING: 2400 AMPS
- MAIN VERTICAL BUS RATING: 2400 AMPS
- MAIN HORIZONTAL BUS RATING: SEE BREAKER RATING
- 208Y/120 VAC, 3 PHASE, 4 WIRE
- 240/120 VAC, 3 PHASE, 4 WIRE, DELTA (B PHASE IS HIGH LEG)
- TYPE 3R OUTDOOR ENCLOSURE
- FOR OVERHEAD OR UNDERGROUND FEED
- FEED THRU TERMINAL LANDINGS
- CENTER PUNCH LOCATORS - NO HUB OPENINGS



Lug Kits and Replacement Parts

Lugs for Phase and Neutral Connections (not supplied)					
Lug No. ①	MFG	Wire Range	Type	No. Wires per phase	Torque (lb.-in.)
LK36750N2	Siemens	1/0-750 kcmil	Mechanical	6	500
LK38500N2C	Siemens	1/0-500 kcmil Copper	Mechanical	8	500
LK38750N2A	Siemens	1/0-750 kcmil Aluminum	Mechanical	8	500
ALND-700/750-12-134	ILSCO	750 kcmil	Compression	6	NA ②

- ① Order one mechanical lug kit for mains and neutral. Additional lug kit is required for feed-thru terminals. Contact lug manufacturer for compression lug quantities supplied for each kit.
 ② See lug manufacturer's instruction sheet supplied with the connector for tool, die, and number of crimps.

Additional Modules

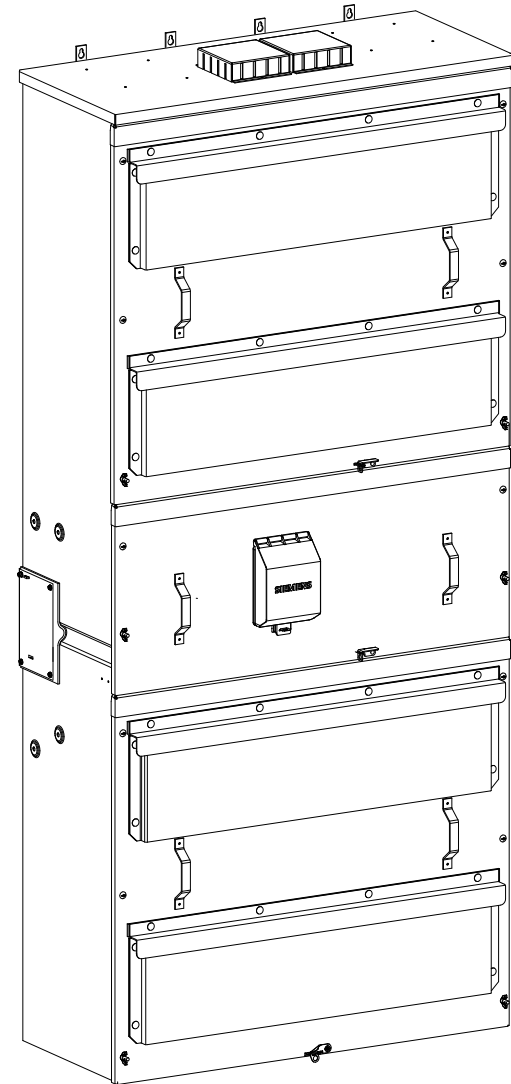
FOR USE WITH:	
Module Description	Siemens Series#
Main Breakers	WB(M), WEB(M), WXB(M), BFT(M)
Switches	WMP, WS, WES, WXS
Tap/Terminal Boxes	WTB, WET, WT_PU, WTBN, WBT(M)
Pull Boxes	WMMB
Meter Module	(W)MM, (W)MT, (W)ML, (W)MK, (W)MLZ(F), (W)MN
Meter Combinations	WC, WCL, WCT,
Extension Box	WSP, WSPD
Bussed Elbow	BE, (W)ELB

Accessories

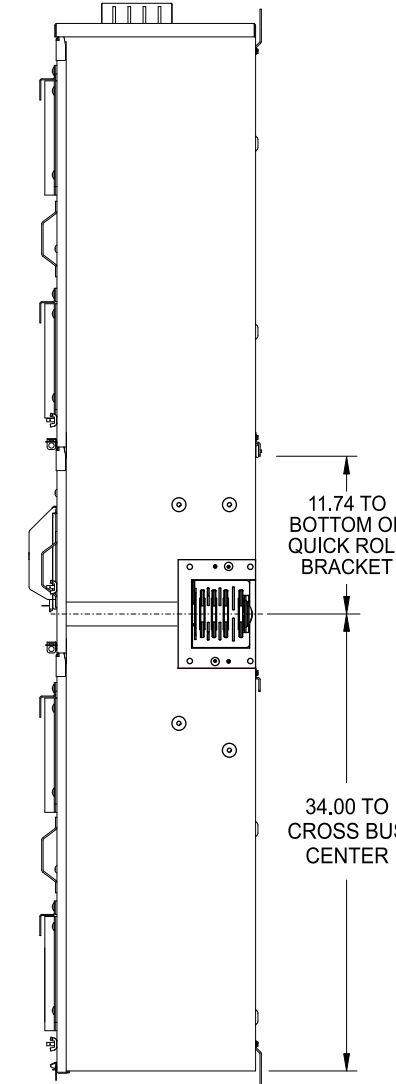
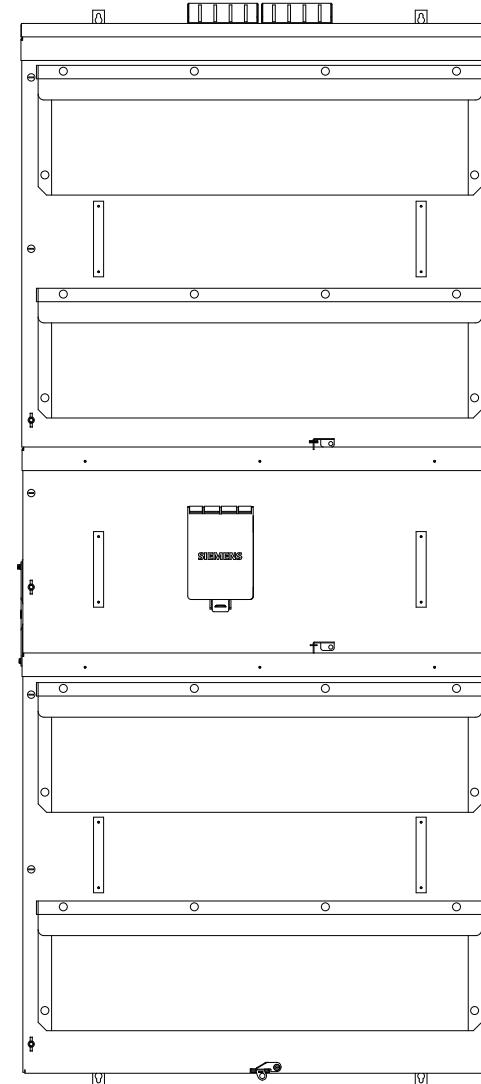
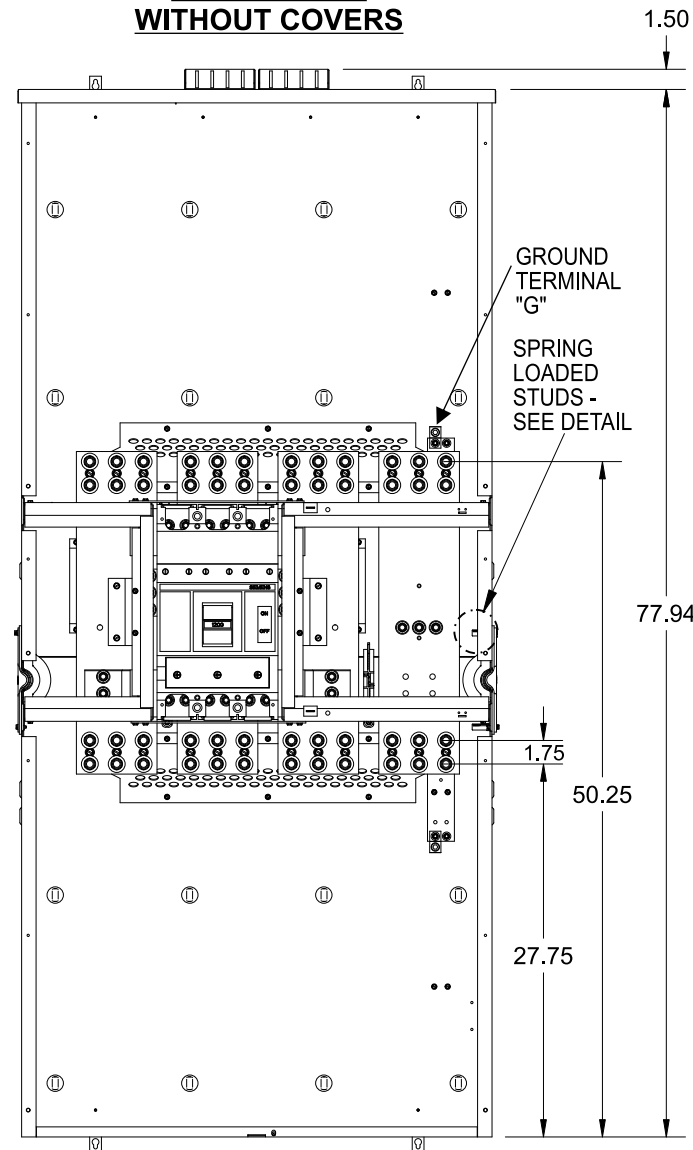
ECMMGBE - Ground Bus Extension
 Ground Terminal G
 (Accessory Cat.# ECMLK3225):
 Wire size #4-300 kcmil. Torque terminal to 250 lb.-in.

Connect Modules Using:	Catalog Number / Torque
QuickConnect	QC4, Torque 400-440 lb-in (35-36 ft.-lb.)

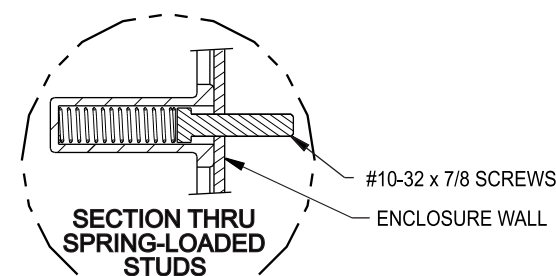
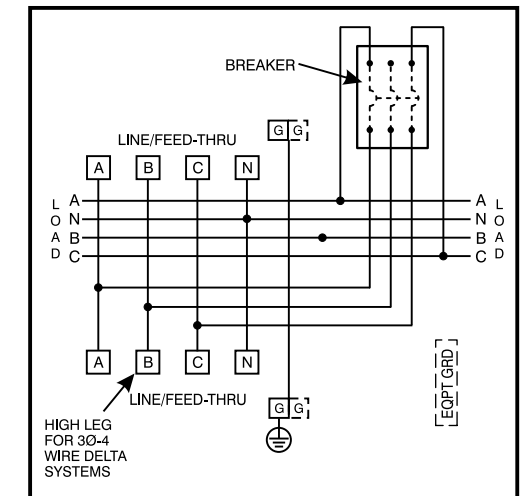
Equip Ground Acc'y Cat. No. ECLX072M	
Small Terminals	Large Terminals
Wire Range / Torque	Wire Range / Torque
10-14 AWG 20 lb-in	10-14 AWG 35 lb-in
8 AWG 25 lb-in	8 AWG 40 lb-in
6 AWG 35 lb-in	1/0-6 AWG . 45 lb-in



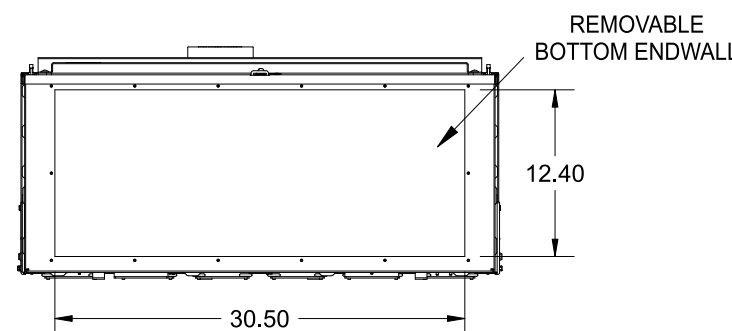
VIEW SHOWN WITHOUT COVERS



Schematic



Catalog No. WBT324X1200NH Shown



SIEMENS
 Siemens Industry, Inc.
PowerMod™ Feed-Thru Main
 Description: **3 Phase, 2400A Feed-Thru, UG, No Hub Openings, 700A-1200A Breaker**