

## Features and Ratings



- Module Rating: 1400 Amps Max.
- Main Bus Rating: 1400 Amps
- Main Horizontal Bus Rating: 1200 Amps Max. (1200 Amps Max feed per side)
- Breaker Rating: 1400 Amps Max.
- 120/240 Volts~, 1 Phase, 3 Wire
- 208Y/120 Volts~, 1 Phase, 3 Wire (from 3 Phase, 4 Wire network)
- Indoor Enclosure
- For Underground Service Only
- Feed Thru and Cross Bus Output
- Electronic Breaker With Maintenance Mode DAS®

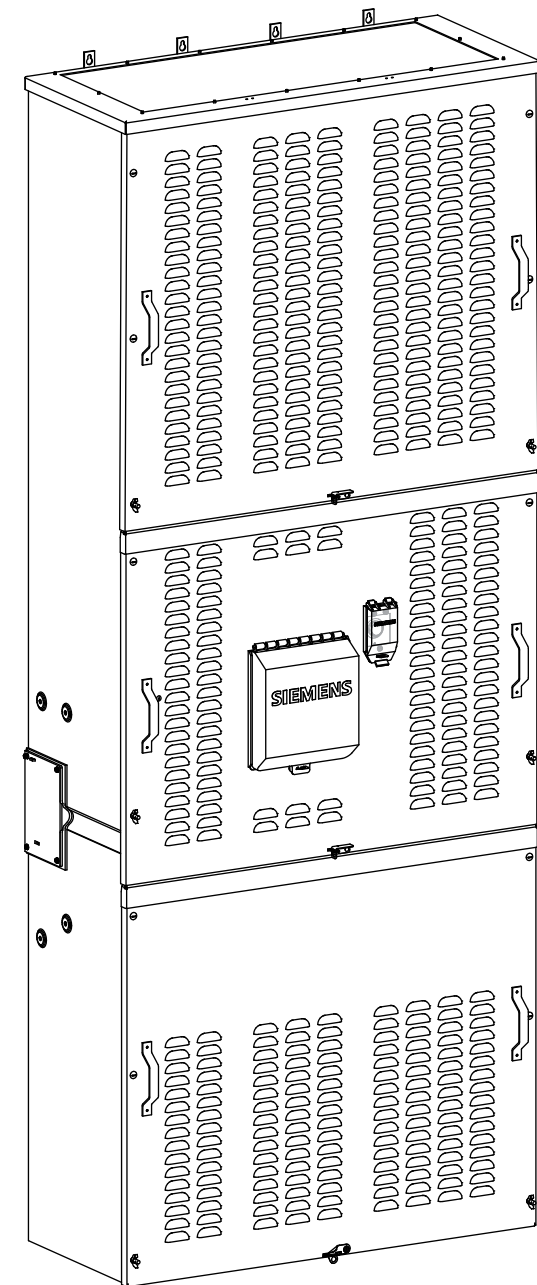
## Catalog Numbers

Catalog No.	Breaker Rating (Max)	Breaker Type	Interrupting Rating(Max)
BFTM11400B	1400 Amps	SPD6-B	65,000
BFTM11400BU	1400 Amps	SHPD6-B	100,000

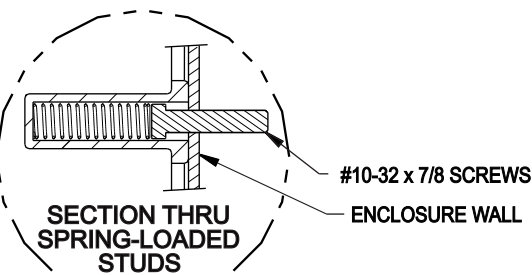
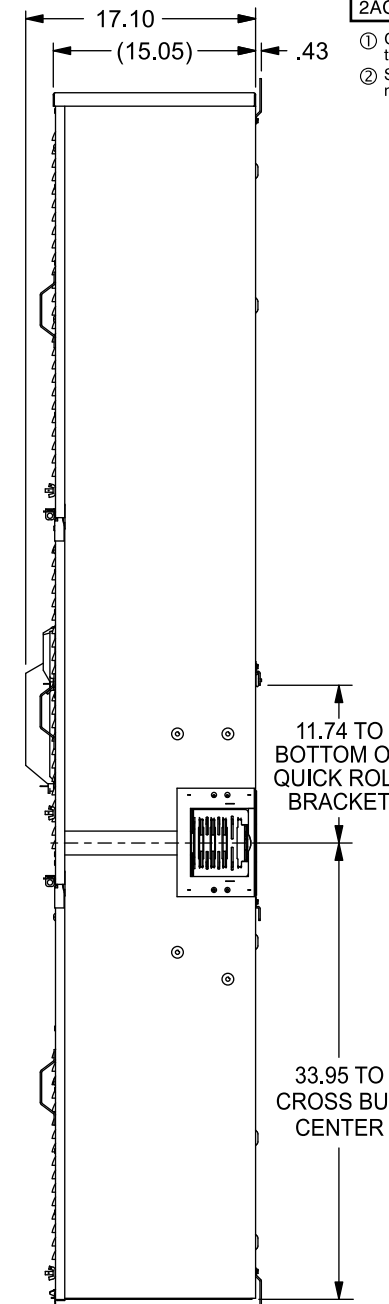
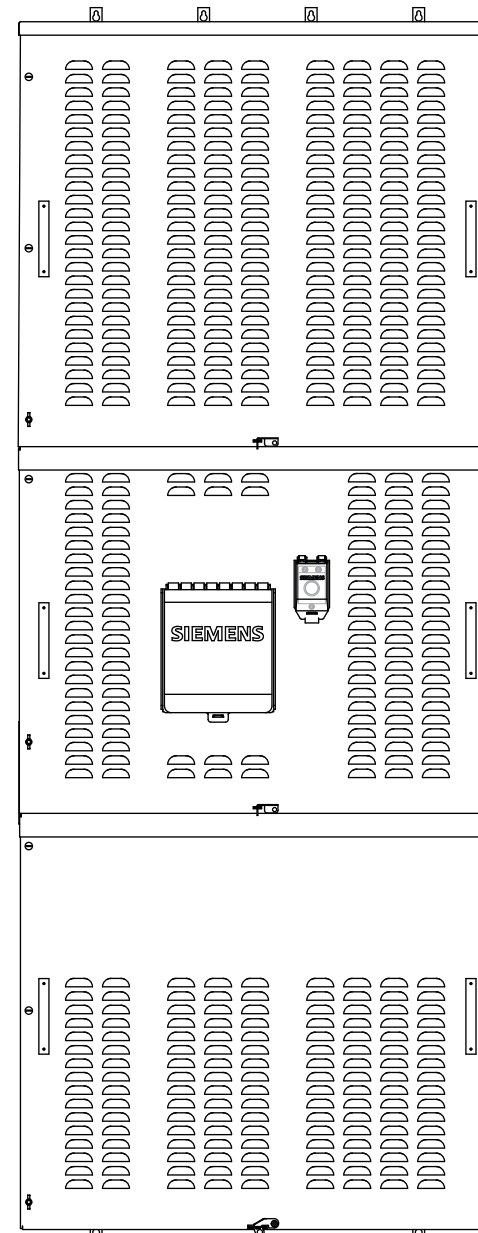
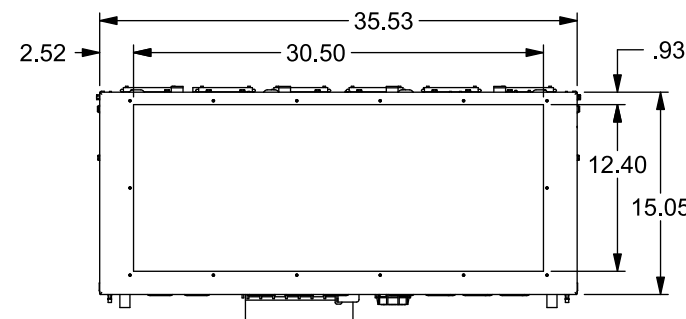
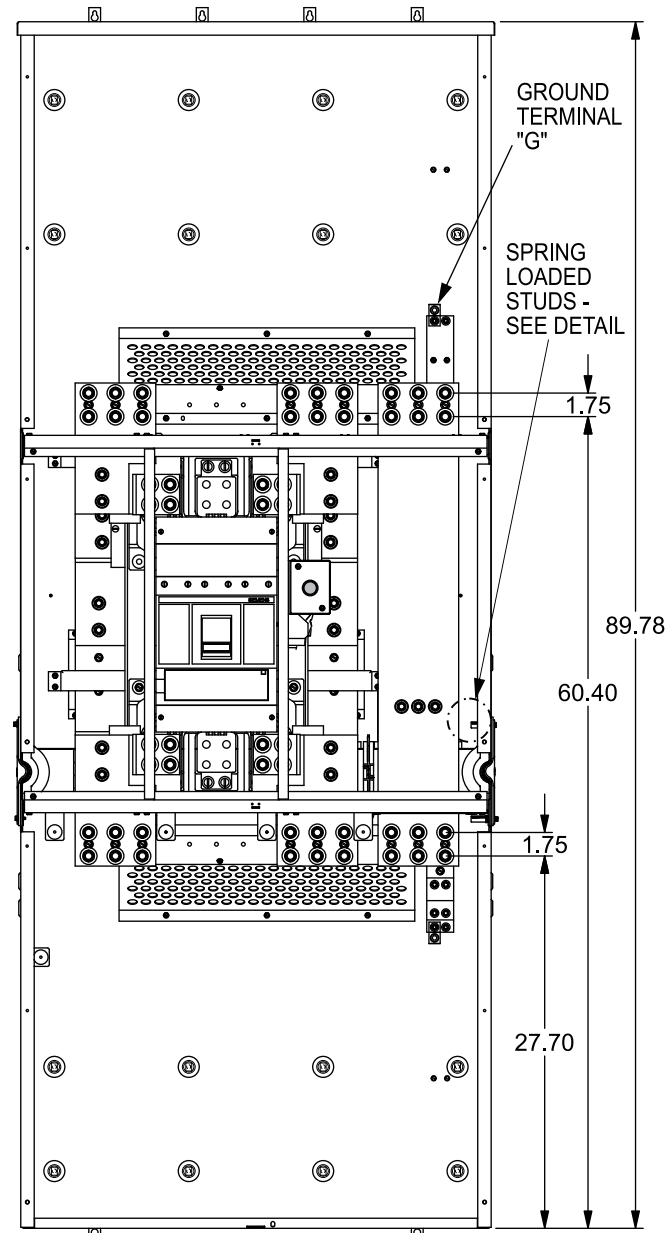
## Lug Kits and Replacement Parts

Lugs for Phase and Neutral Connections (not supplied)					
Lug No. ①	MFG	Wire Range	Type	No. Wires per phase	Torque (lb.-in.)
LK15600N2	Siemens	1/0-600 kcmil	Mechanical	5	500
LK15750N2	Siemens	300-750 kcmil	Mechanical	5	500
LK16750N2	Siemens	1/0-750 kcmil	Mechanical	6	500
LK18500N2CD	Siemens	1/0-500 kcmil Copper	Mechanical	8	500
LK18750N2AD	Siemens	1/0-750 kcmil Aluminum	Mechanical	8	500
2ACL-600	ILSCO	500 kcmil	Compression	5	NA ②
2ACL-750	ILSCO	750 kcmil	Compression	5	NA ②
2ACL-750	ILSCO	750 kcmil	Compression	6	NA ②

- ① Order one mechanical lug kit for mains and neutral. Additional lug kit is required for feed-thru terminals. Contact lug manufacturer for compression lug quantities supplied for each kit.  
 ② See lug manufacturer's instruction sheet supplied with the connector for tool, die, and number of crimps.



VIEW SHOWN WITHOUT COVERS



REMOVABLE ENDWALL (TYP. ON TOP AND BOTTOM)



**Catalog No.**  
**BFTM11400BU Shown**

© 2019 Copyright Siemens Industry, Inc.

## Additional Modules

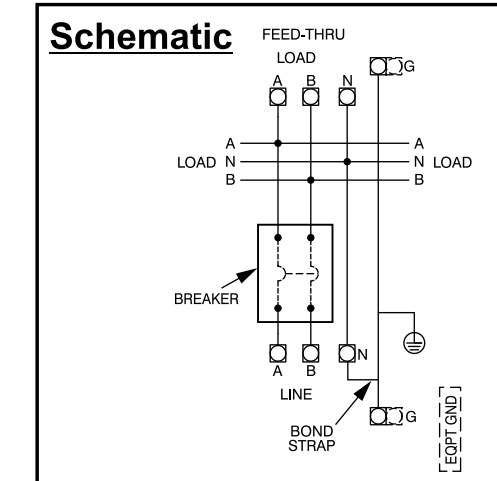
FOR USE WITH:	Siemens Series#
Main Breakers	WB(M), WEB(M), WXB(M), BFT(M)
Switches	WMP, WS, WES, WXS
Tap/Terminal Boxes	WTB, WET, WT, PU, WTBN, WBT(M)
Pull Boxes	WMMB
Meter Module	(W)MM, (W)MT, (W)ML, (W)MK, (W)MLZ(F), (W)MN
Meter Combinations	WC, WCL, WCT
Extension Box	WSP, WSPD
Busseled Elbow	BE, WELB

## Accessories

ECMMGBE - Ground Bus Extension  
 Ground Terminal G (Accessory Cat.# ECMLK3225):  
 Wire size #4-300 kcmil. Torque terminal to 250 lb.-in.

Connect Modules Using:	Catalog Number / Torque
QuickConnect	QC1, Torque 400-440 lb-in (35-36 ft.-lb.)

Equip Ground Acc'y Cat. No. ECLX072M	
<b>Small Terminals</b>	<b>Large Terminals</b>
Wire Range / Torque	Wire Range / Torque
10-14 AWG 20 lb-in	10-14 AWG 35 lb-in
8 AWG . . . . 25 lb-in	8 AWG . . . . 40 lb-in
6 AWG . . . . 35 lb-in	1/0-6 AWG . 45 lb-in



**SIEMENS**  
Siemens Industry, Inc.

**PowerMod™ Main Feed-Thru**

Description: **Indoor, 1 Phase, Feed-Thru, UG Feed, 1400A DAS Breaker**

KAM 3/20/19 DO NOT SCALE DRAWING Dwg No: **BFTM11400B-BU**