





22MM METAL ROUND ACTUATOR: PUSH-PULL BUTTON 30MM LATCHING W.PULL-TO-UNLOCK MECH. WITH HOLDER RED






Figure similar

<b>Design of the product</b>	Single device round
<b>Enclosure</b>	
<b>Number of command points</b>	1
<b>Actuator</b>	
<b>Design of the operating mechanism</b>	Mushroom-shaped push-pull switch
<b>Manner of function of the actuating element</b>	Latching
<b>Product extension optional Light source</b>	No
<b>Color</b>	
• of the actuating element	Red
<b>Material of the actuating element</b>	plastic
<b>Outer diameter of the actuating element</b>	30 mm
<b>Type of unlocking device</b>	pull-to-unlatch mechanism
<b>Number of switching positions</b>	2
<b>Front ring</b>	
<b>Product component front ring</b>	Yes
<b>Design of the front ring</b>	Standard
<b>Material of the front ring</b>	metal

Color of the front ring	silver
<b>Holder</b>	
Material of the holder	Metal
<b>General technical data</b>	
<b>Product function</b>	
• EMERGENCY OFF function	No
• EMERGENCY STOP function	No
<b>Protection class IP</b>	IP67
<b>Vibration resistance</b>	
• acc. to IEC 60068-2-6	20 ... 200 Hz: 5g
<b>Operating frequency maximum</b>	1 000 1/h
<b>Mechanical service life (switching cycles)</b>	
• typical	300 000
<b>Equipment marking</b>	
• acc. to DIN 40719 extended according to IEC 204-2 acc. to IEC 750	S
• acc. to DIN EN 61346-2	S
• acc. to DIN EN 81346-2	S
<b>Connections/Terminals</b>	
<b>Tightening torque of the screws in the bracket</b>	1.4 ... 1.6 N·m
<b>Ambient conditions</b>	
<b>Ambient temperature</b>	
• during operation	-25 ... +70 °C
• during storage	-40 ... +80 °C
Environmental category during operation acc. to IEC 60721	3K6
<b>Installation/ mounting/ dimensions</b>	
<b>Mounting type</b>	front mounting
<b>Shape of the installation opening</b>	round
<b>Mounting diameter</b>	22 mm
<b>Mounting height</b>	27.5 mm
<b>Installation width</b>	30 mm
<b>Installation depth</b>	29 mm
<b>Certificates/approvals</b>	

General Product Approval			Declaration of Conformity	Test Certificates	Marine / Shipping
				<a href="#">Special Test Certificate</a>	
CSA	UL		EG-Konf.		ABS

Marine / Shipping			other		
			<a href="#">Confirmation</a>	<a href="#">Miscellaneous</a>	<a href="#">Environmental Confirmations</a>
LRS	PRS	RINA			

### Further information

**Information- and Downloadcenter (Catalogs, Brochures,...)**

<http://www.siemens.com/industrial-controls/catalogs>

**Industry Mall (Online ordering system)**

<https://mall.industry.siemens.com/mall/en/en/Catalog/product?mlfb=3SB3500-1EA21>

**Cax online generator**

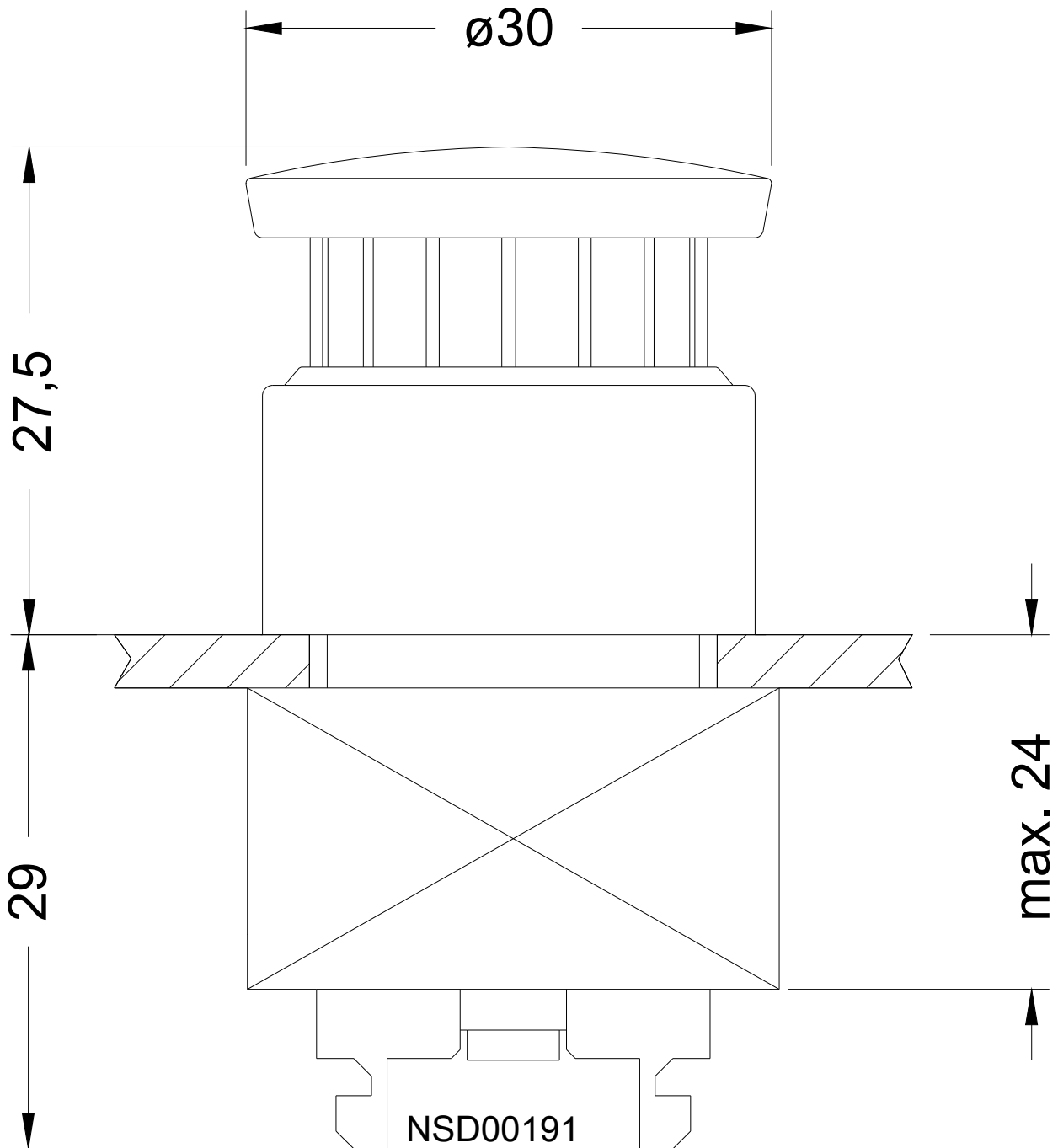
<http://support.automation.siemens.com/WW/CAXorder/default.aspx?lang=en&mlfb=3SB3500-1EA21>

**Service&Support (Manuals, Certificates, Characteristics, FAQs,...)**

<https://support.industry.siemens.com/cs/ww/en/ps/3SB3500-1EA21>

**Image database (product images, 2D dimension drawings, 3D models, device circuit diagrams, EPLAN macros, ...)**

[http://www.automation.siemens.com/bilddb/cax\\_de.aspx?mlfb=3SB3500-1EA21&lang=en](http://www.automation.siemens.com/bilddb/cax_de.aspx?mlfb=3SB3500-1EA21&lang=en)



last modified:

07/27/2017