

## EPIC® H-BE 32 screw connection

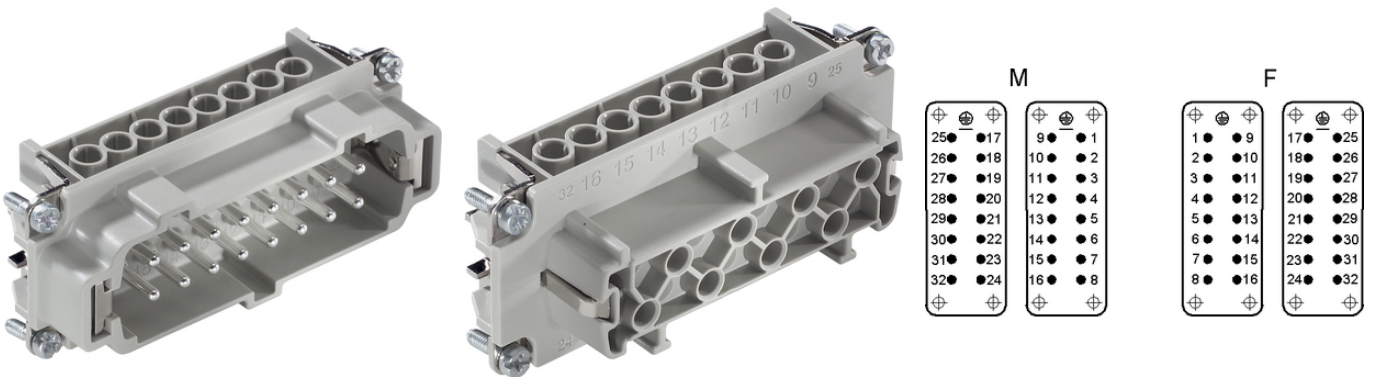
The tried-and-tested standard inserts for easy assembly

The standard insert with screw termination can be used for higher voltages and currents and is highly reliable.

### Info

Tried-and-tested screw connection for easy installation

Screw, crimp, cage clamp and Push-In version - freely combinable



Temperature-resistant



Robust



Rail



Industrial machinery and plant engineering



Automation & fältinstallation



### Benefits

The standard inserts with screw, crimp cage clamp and push-in connection

The tried-and-tested EPIC® H-BE series is suitable for applications that require a reliable connection when working with high voltages and currents.

Railway applications

- Fire protection on railway vehicles: Test according to EN 45545-2. Requirement set R22 and R23. Hazard level HL1, HL2 and HL3.

Last Update (30.05.2017)

©2017 Lapp Group - Technical changes reserved

Product Management [www.lappkabel.de](http://www.lappkabel.de)

You can find the current technical data in the corresponding data sheet.

PN 0456 / 02\_03.16

## EPIC® H-BE 32 screw connection

### Application range

Mechanical engineering  
Plastics industry  
Event equipment  
Railway applications / vehicle construction

### Technical Data

Classification:	ETIM 5.0 Class-ID: EC000438 ETIM 5.0 Class-Description: Contact insert for industrial connectors
Rated voltage (V):	IEC: 500 VUL: 600 VCSA: 600 V
Rated impulse voltage:	6 kV
Rated current in A:	IEC: 16 A UL: 16 A CSA: 16 A
Pollution degree:	3
Flammability:	UL94 V-0
Contact resistance:	< 2 mOhm
Contacts:	Copper alloy, hard silver-plated
Number of contacts:	32 + PE
Cable connection:	Screw connection: 0.5 – 2.5 mm <sup>2</sup>
Stripping length (mm):	8
Material:	PC polycarbonate
Plug cycles:	500
Certifications:	Certified production control: VDE reg. no.: B437 UL-tested: UL file number: E75770 and E483837
Temperature range:	-40°C to +100°C, short-term up to +125°C

### Note

Photographs are not to scale and do not represent detailed images of the respective products.  
Prices are net prices without VAT and surcharges. Sale to business customers only.

**EPIC® H-BE 32 screw connection**

Article number	Article description	Contact type	Wire protection	Number of working contacts
H-BE 32 screw connection				
10202000	EPIC® H-BE 16 SS 17-32	male	yes	17 - 32
10203000	EPIC® H-BE 16 BS 17-32	female	yes	17 - 32
10202100	EPIC® H-BE 16 SS 17-32	male	17 - 32	
10203100	EPIC® H-BE 16 BS 17-32	female	17 - 32	

Last Update (30.05.2017)

©2017 Lapp Group - Technical changes reserved

Product Management [www.lappkabel.de](http://www.lappkabel.de)

You can find the current technical data in the corresponding data sheet.  
PN 0456 / 02\_03.16