

Undervoltage release 24 V AC, 50 Hz/60 Hz with leading auxiliary contact 2 NO with screw terminal for circuit breaker 3RV2



General technical data	
Product brand name	SIRIUS
Product designation	undervoltage release
Size of the circuit-breaker	S00, S0, S2, S3
Design of the product	with 2 auxiliary contacts
Suitability for use	motor circuit breaker
Protection class IP on the front	IP20
Design of short-circuit protection	fuse
Degree of pollution	3
Insulation voltage rated value	690 V
Insulation voltage with degree of pollution 3 at AC rated value	690 V
Ambient temperature	
• during storage	-50 ... +80 °C
• during operation	-20 ... +60 °C
Reference code acc. to DIN 40719 extended according to IEC 204-2 acc. to IEC 750	F
Reference code acc. to DIN EN 61346-2	F

### Auxiliary circuit

Number of NC contacts for auxiliary contacts instantaneous contact	0
Number of NO contacts for auxiliary contacts instantaneous contact	0
Number of NO contacts for auxiliary contacts leading contact	2
Number of CO contacts of auxiliary contacts instantaneous contact	0

#### Control circuit/ Control





<b>Type of voltage of the control supply voltage</b>	AC
<b>Control supply voltage frequency</b>	
<ul style="list-style-type: none"> <li>• 1 <ul style="list-style-type: none"> <li>— Initial rated value</li> </ul> </li> </ul>	50 Hz
<b>Control supply voltage</b>	
<ul style="list-style-type: none"> <li>• 1 <ul style="list-style-type: none"> <li>— at AC</li> <li>— at 50 Hz rated value</li> </ul> </li> </ul>	24 V

#### Installation/ mounting/ dimensions



<b>Mounting type</b>	snap-on mounting
<b>Width</b>	18.5 mm
<b>Height</b>	90 mm
<b>Depth</b>	68 mm

#### Certificates/ approvals

<b>Certificate of suitability</b>	CE / UL / CSA
-----------------------------------	---------------

General Product Approval		Declaration of Conformity		Test Certificates
 CSA	 UL		 EG-Konf.	<a href="#">Miscellaneous</a> <a href="#">Special Test Certificate</a>

Test Certificates	Shipping Approval				
<a href="#">Type Test Certificates/Test Report</a>	 ABS	 BUREAU VERITAS	 LRS	 PRS	 RINA

Shipping Approval	other	Railway
 DNV-GL DNVGL.COM/AF	<a href="#">Confirmation</a>  VDE	<a href="#">Vibration and Shock</a>

#### Further information

##### Information- and Downloadcenter (Catalogs, Brochures,...)

<https://www.siemens.com/ic10>

##### Industry Mall (Online ordering system)

<https://mall.industry.siemens.com/mall/en/en/Catalog/product?mlfb=3RV2922-1CB0>

##### Cax online generator

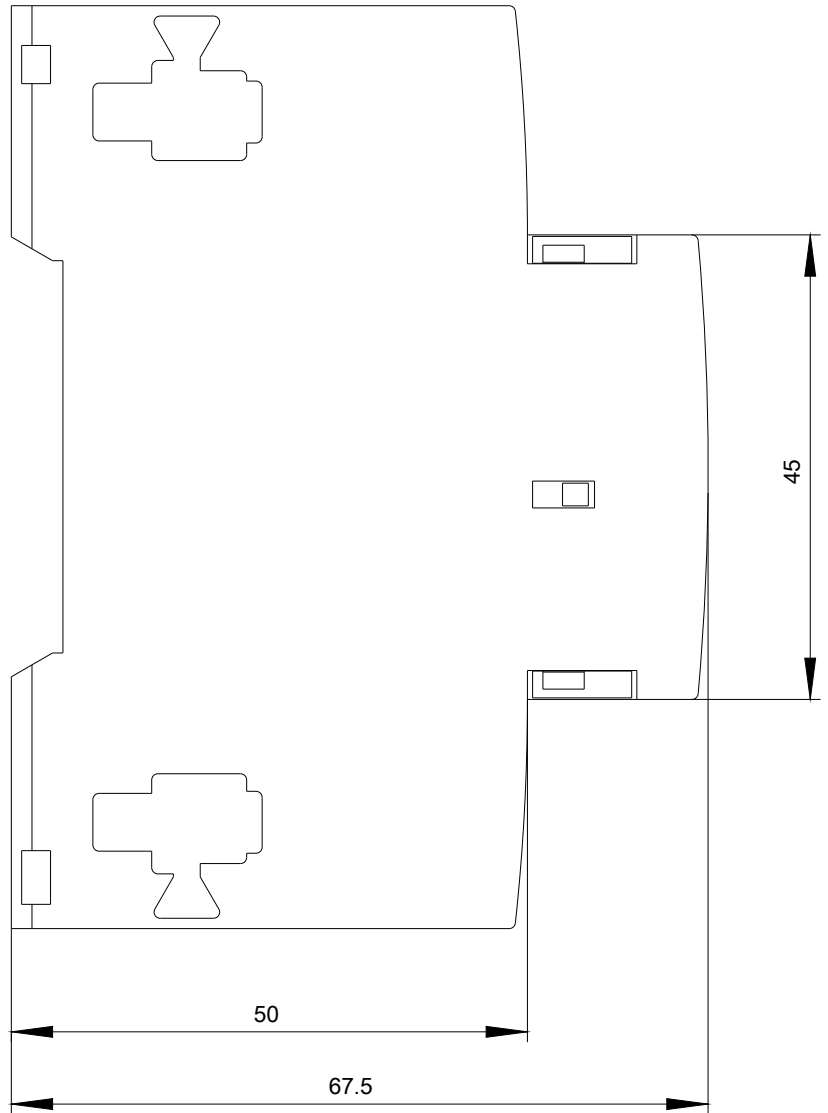
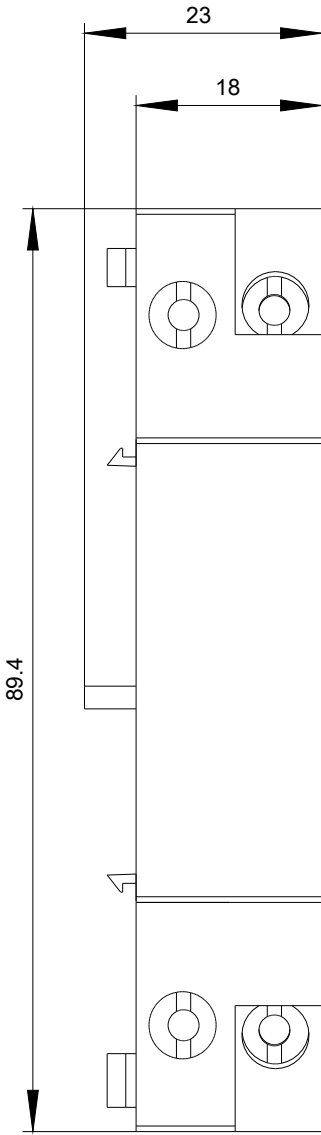
<http://support.automation.siemens.com/WW/CAXorder/default.aspx?lang=en&mlfb=3RV2922-1CB0>

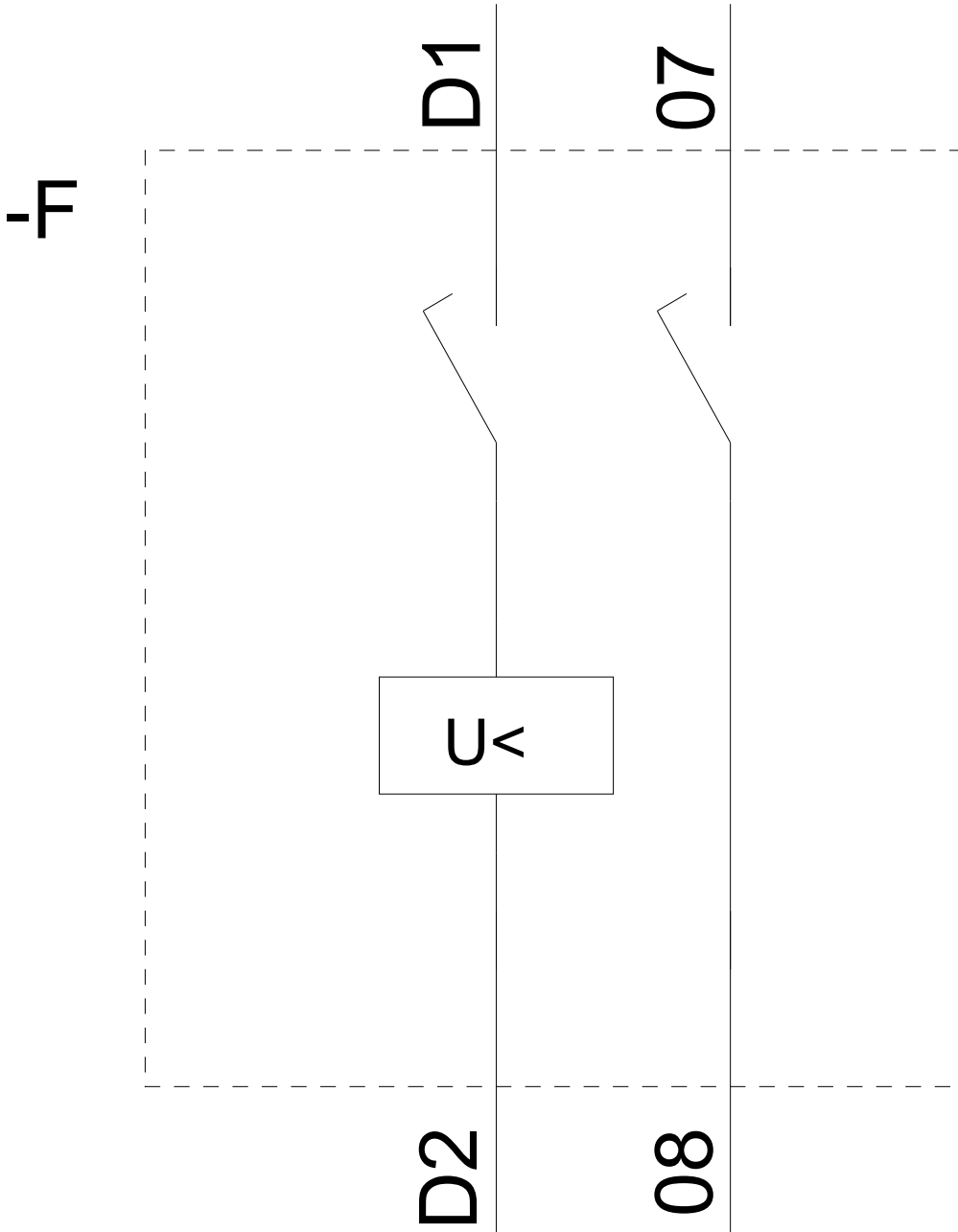
##### Service&Support (Manuals, Certificates, Characteristics, FAQs,...)

<https://support.industry.siemens.com/cs/ww/en/ps/3RV2922-1CB0>

##### Image database (product images, 2D dimension drawings, 3D models, device circuit diagrams, EPLAN macros, ...)

[http://www.automation.siemens.com/bilddb/cax\\_de.aspx?mlfb=3RV2922-1CB0&lang=en](http://www.automation.siemens.com/bilddb/cax_de.aspx?mlfb=3RV2922-1CB0&lang=en)





last modified:

04/14/2020