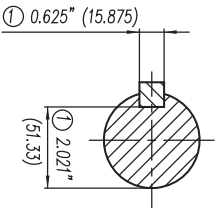


- ① Tolerances According to NEMA Std.
- ② All these dimensions corresponding to assemblies and castings shall have a tolerance as per DIN standard 1686-GTB-19.
- ③ Not According to NEMA Std.

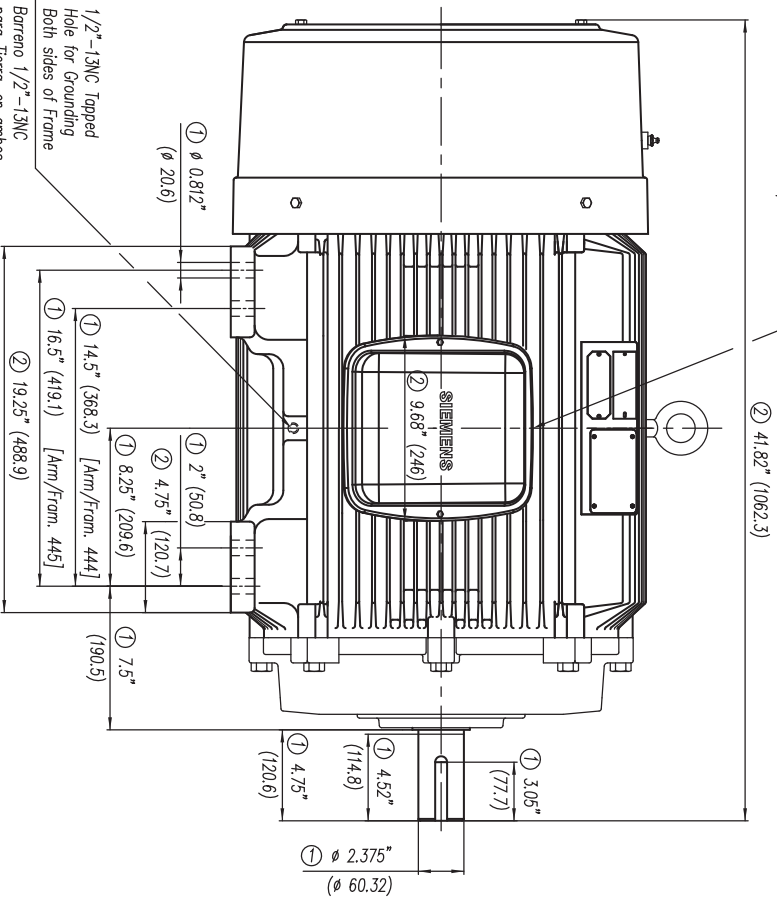
CERTIFIED PRINT / CERTIFICACION

OSI/OPERAZIONE		SIGNIFICAZIONE	
№	REV	DATA/REV	REVISIONI



Keyseat detail
Detalle Cuñero

Conduit Box may be rotated in steps of 90 Degrees.
La caja de conexiones puede ser rotada en pasos de 90°



1/2"-13NC Tapped Hole for Grounding Both sides of Frame
Barreno 1/2"-13NC para Tierra, en ambos lados de la Carcasa

Tol. in mm, acc. to Tol. in mm, según DIN-1686-GTB-19	Over/desde to/hasta	18	30	50	80	120	180	250	315	400	500	630
		± 4.5	± 4.7	± 5	± 5.5	± 6	± 6.5	± 7	± 7.5	± 8	± 8.5	± 10
European Projection/Proyeccion Europea	Dim. in inches/dim. en pulg.											
Modific.	Date/Fecha											
	Name/Nombre											
	Drawn/Elab.											
	Check/Rev.											
	Std/Ctd/Aut.											
SIEMENS		GUADALAJARA FACTORY										
Outline/Dimensiones		New NEMA Motors (TS) Short Shaft/ Eje corto										
Type/ Tipo:		GP10 y GP100 444/445TS FRAME (Epoct & mNP)										
Ref. 3MSE 750 0635		Rep. 150										
Scale/Escala		-/-										