

pushbutton, flat, blue, for pushbutton, with laser labeling, upper case and lower case, always upper case at the beginning of the word

Product brand name	SIRIUS ACT
Product designation	Button
Design of the product	flat
Product type designation	3SU1

### Actuator

Outer diameter of the actuating element	23.7 mm
-----------------------------------------	---------

### Ambient conditions

Environmental category during operation acc. to IEC 60721	3M6, 3S2, 3B2, 3C3, 3K6 (with relative air humidity of 10 ... 95 %)
-----------------------------------------------------------	---------------------------------------------------------------------





### Installation/ mounting/ dimensions

Depth	2.2 mm
-------	--------

### Accessories

Material of accessory	Plastic
Color of accessory	blue

### Certificates/ approvals

General Product Approval		Declaration of Conformity		Test Certificates
 CSA	 UL		 EG-Konf.	<a href="#">Miscellaneous</a> <a href="#">Type Test Certificates/Test Report</a>

### Marine / Shipping



### other

[Confirmation](#)

## Further information

### Information- and Downloadcenter (Catalogs, Brochures,...)

<https://www.siemens.com/ic10>

### Industry Mall (Online ordering system)

<https://mall.industry.siemens.com/mall/en/en/Catalog/product?mlfb=3SU1900-0FT50-0AA0-Z Y15>

### Cax online generator

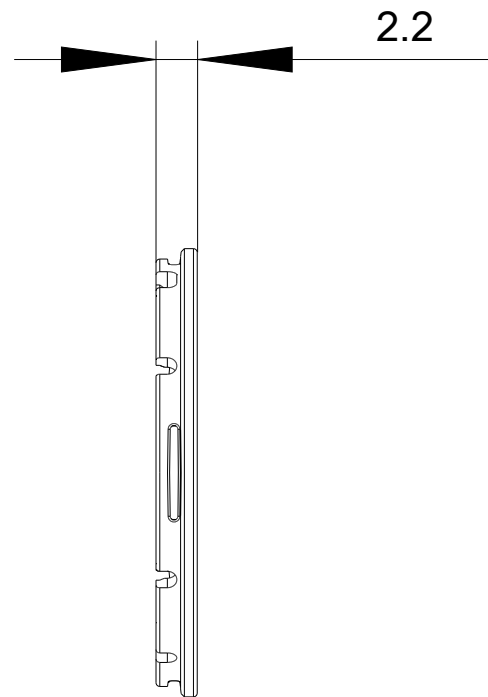
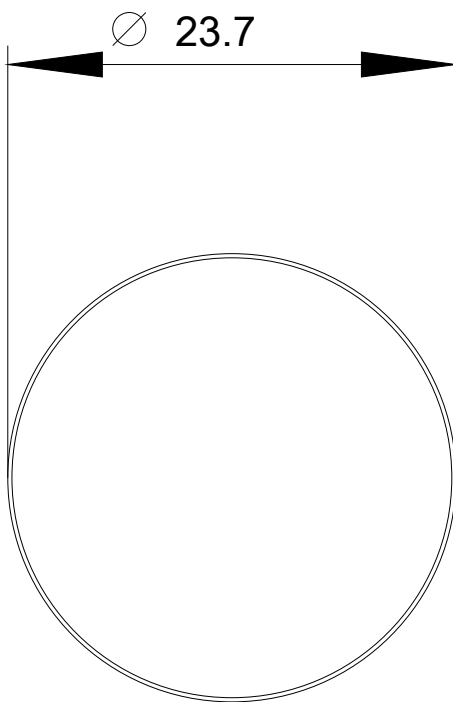
<http://support.automation.siemens.com/WW/CAXorder/default.aspx?lang=en&mlfb=3SU1900-0FT50-0AA0-Z Y15>

### Service&Support (Manuals, Certificates, Characteristics, FAQs,...)

<https://support.industry.siemens.com/cs/ww/en/ps/3SU1900-0FT50-0AA0-Z Y15>

### Image database (product images, 2D dimension drawings, 3D models, device circuit diagrams, EPLAN macros, ...)

[http://www.automation.siemens.com/bilddb/cax\\_de.aspx?mlfb=3SU1900-0FT50-0AA0-Z Y15&lang=en](http://www.automation.siemens.com/bilddb/cax_de.aspx?mlfb=3SU1900-0FT50-0AA0-Z Y15&lang=en)



last modified:

02/06/2020