

Data sheet for SIMOTICS S-1FK2

Article No. : 1FK2210-4AC00-0MB0

Client order no. :
Order no. :
Offer no. :
Remarks :

Item no. :
Consignment no. :
Project :

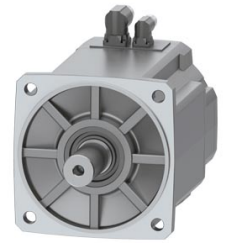


Figure similar

Basic motor data

Motor type	Permanent-magnet synchronous motor, Natural cooling, IP64
Motor type	Compact
Static torque	40.00 Nm
Static current	15.0 A
Maximum torque	120.00 Nm
Maximum current	55.0 A
Maximum speed	3,300 rpm
Rotor moment of inertia	117.0000 kgcm ²
Weight	27.0 kg

Rated data

SINAMICS S120, BLM/SLM 3AC 400V

Rated speed	2,000 rpm
Rated torque	30.50 Nm
Rated current	11.8 A
Rated power	6.40 kW

Encoder system

Encoder system	Encoder AM22DQC: Absolute encoder 22 bit + 12 bit multiturn
----------------	---

Motor connection

Connection type	Double cable connection for S120
Connector size	M23

Mechanical data

Design acc. to Code I	IM B5 (IM V1, IM V3)
Vibration severity grade	Grade A
Shaft height	100
Flange size (AB)	192 mm
Centering ring (N)	180 mm
Hole circle (M)	215 mm
Screw-on hole (S)	14.0 mm
Overall length (LB)	223 mm
Diameter of shaft (D)	38 mm
Length of shaft (E)	80 mm
Length of flange diagonal (P)	244 mm
Shaft end	Plain shaft
Color of the housing	Standard (Anthracite, similar to RAL 7016)

