

Catalog Numbers

Catalog No.	Amp. Rating	Max. Interrupting Rating
1 PHASE, 3 WIRE, 120/240V AC MAX		
WBM11200CNH	1200	65,000
WBM11200CUNH	1200	100,000
3 PHASE, 4 WIRE, 240V AC MAX		
WBM31200CNH	1200	65,000
WBM31200CUNH	1200	100,000

- TYPE 3R OUTDOOR ENCLOSURE
- MAIN BUS RATING: 1200A MAX.
- OVERHEAD OR UNDERGROUND SERVICE
- ELECTRONIC BREAKER WITH MAINTENANCE MODE DAS®



Replacement Parts, Accessories, And Additional Modules

FOR USE WITH:	
Module Description	Siemens Series#
Main Breakers	WB(M), WEB(M), WXB, BFT
Switches	WMP, WS, WES, WXS
Tap/Terminal Boxes	WTB, WET, WT_PU, WTBN, WBT
Pull Boxes	WMMB
Meter Module	(W)MM, (W)MT, (W)ML, (W)MK, (W)MLZ(F), (W)MN
Meter Combinations	WC, WCL, WCT,
Extension Box	WSP, WSPD
Bussed Elbow	BE, WELB

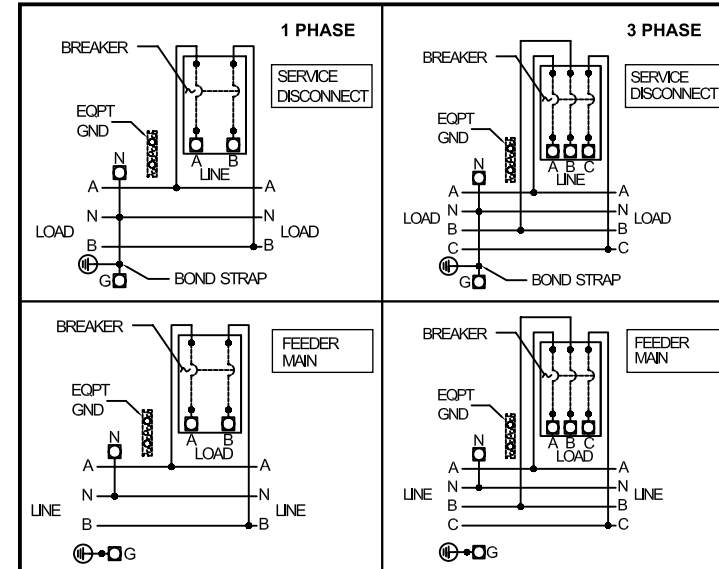
Connect Modules Using	Catalog Number / Torque
QuickConnect	QC1 (1ph) or QC4 (3ph) 400-440 lb-in (35-36 ft.-lb.) Torque

Accessory	Catalog No.	Accessory	Catalog No.
Hub Cover Plate	EC56933S	HD Hub 3"	EC56856
HD Hub 2"	EC56854	HD Hub 3-1/2"	EC56857
HD Hub 2-1/2"	EC56855	HD Hub 4"	EC56858
GND Bar Kit	ECLX069M		
Lug Landing Pad	LLP1200 (lugs ordered separately) UNDERGROUND USE ONLY		

Breaker Lug Kits				
Lug Kit	MFG	Wire Range	No. Wires per phase	Torque (lb.-in.)
Single Phase Mechanical Lug Kits				
LK14500*	Siemens	250-500 kcmil	4	375
LK13750	Siemens	500-750 kcmil	3	375
Three Phase Mechanical Lug Kits				
LK34500*	Siemens	250-500 kcmil	4	375
LK33750	Siemens	500-750 kcmil	3	375

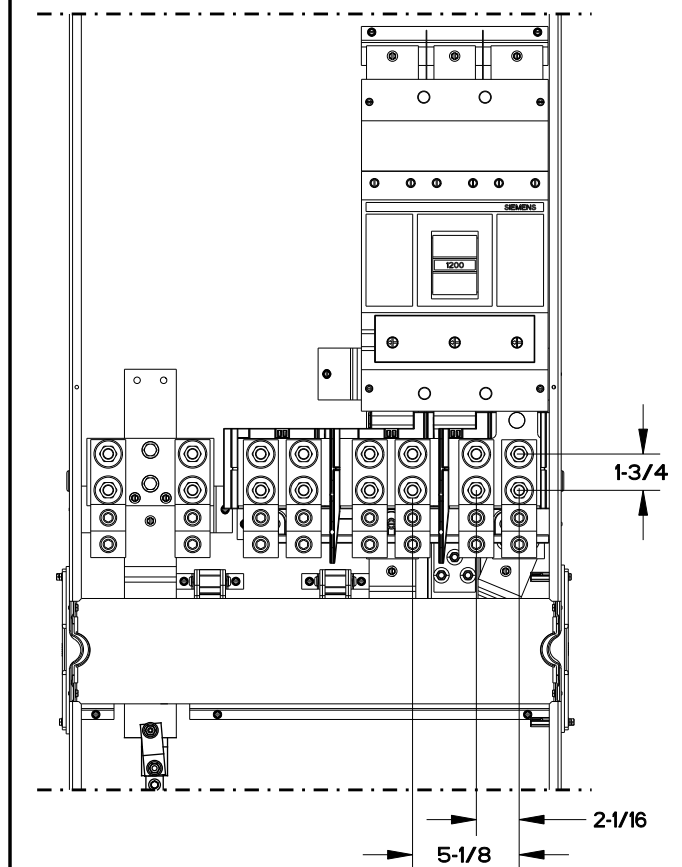
* Factory Installed

Schematics



LLP1200 Lug Landing Kit

VIEW WITH LUG LANDING KIT INSTALLED
SHOWN WITH LUGS INSTALLED



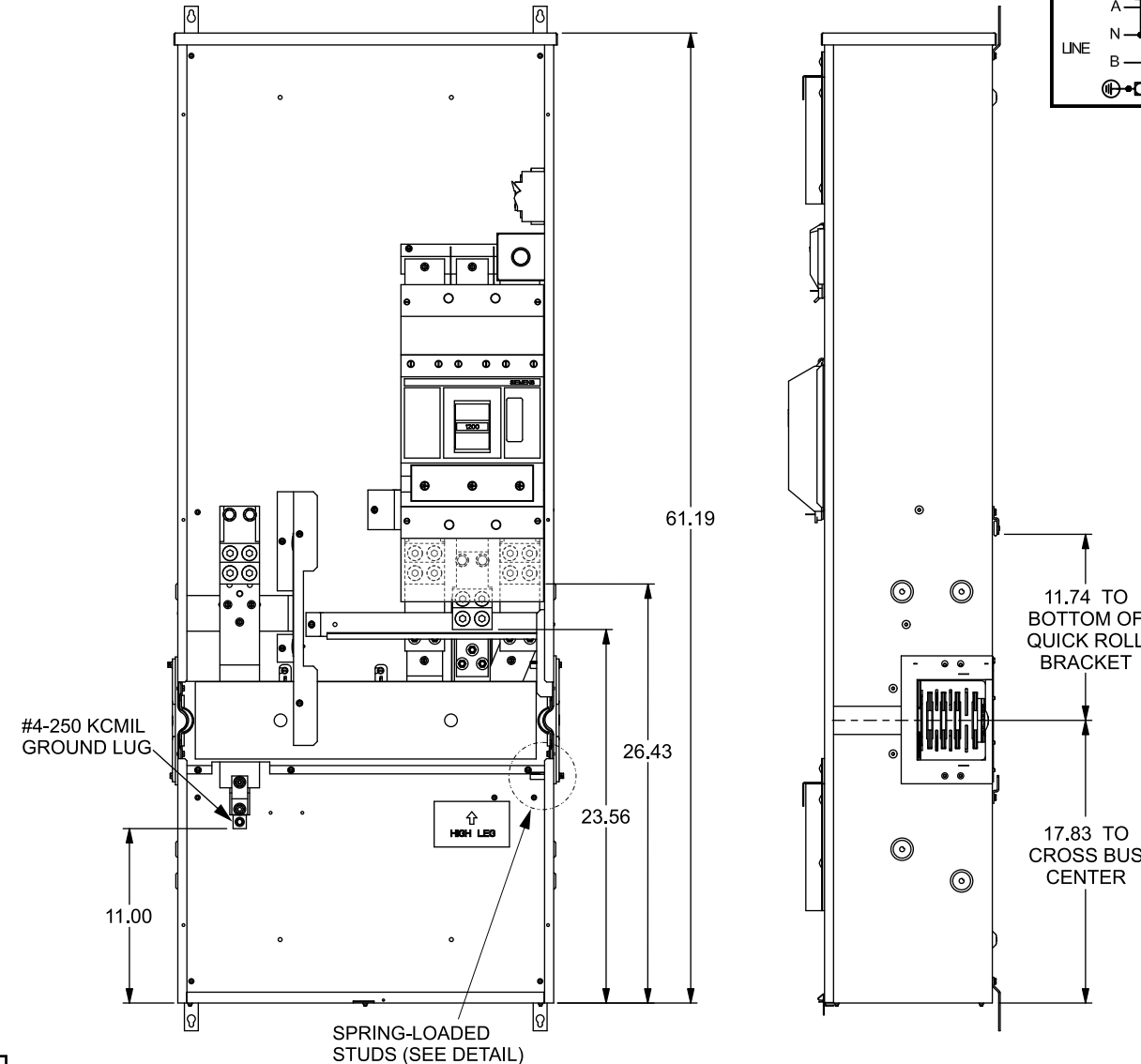
Lug Kits for LLP1200 Phase and Neutral Connections

1 Phase: Lugs for Phase and Neutral Connections (not supplied)					
NEMA Lug	MFG	Wire Range	Type	No. Wires per phase	Torque (lb.-in.)
LK13750N2	Siemens	300-750 kcmil	Mechanical	3	500 ②
LK14500N2	Siemens	1/0-500 kcmil	Mechanical	4	500
2ACL-500	ILSCO	500 kcmil	Compression	4	NA ③
2ACL-750	ILSCO	750 kcmil	Compression	3	NA ③

3 Phase: Lugs for Phase and Neutral Connections (not supplied)					
NEMA Lug	MFG	Wire Range	Type	No. Wires per phase	Torque (lb.-in.)
LK33750N2	Siemens	300-750 kcmil	Mechanical	3	500 ②
LK34500N2	Siemens	1/0-500 kcmil	Mechanical	4	500
2ACL-500	ILSCO	500 kcmil	Compression	4	NA ③
2ACL-750	ILSCO	750 kcmil	Compression	3	NA ③

- ① Order one mechanical lug kit for main breaker and neutral conversions. Contact lug manufacturer for compression lug quantities supplied for each kit.
- ② Kit contains more than one lug type.
- ③ See lug manufacturer's instruction sheet supplied with the connector for tool, die, and number of crimps.

FRONT VIEW SHOWN WITH COVER AND SHIELDS REMOVED



#10-32 SEALING SCREW
#10-32 x 5/8 SCREWS

#4-250 KCMIL GROUND LUG

HIGH LEG

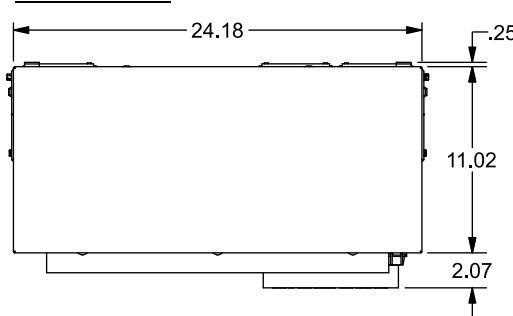
SPRING-LOADED STUDS (SEE DETAIL)

REMOVABLE BOTTOM ENDWALL OPENING

#10-32 x 7/8 SCREWS ENCLOSURE WALL

SECTION THRU SPRING-LOADED STUDS

TOP VIEW



WBM31200CNH (3 Phase) SHOWN

© 2018 Copyright Siemens Industry, Inc.

SIEMENS
Siemens Industry, Inc.

PowerMod™ Breaker Mains

Description:
1200A, 1 & 3 Phase, No Hub Openings, Service Entrance DAS® Breaker Main

KAM 3/1/18 DO NOT SCALE DRAWING Dwg No: 1200A_WBM_Brkr_MainNH