

Adjustable-length Twist lever for position switch 3SE51/52 Stainless steel lever 100 mm long with stainless steel terminal plastic roller 19 mm



Product brand name	SIRIUS
Product designation	actuator for part-turn actuator
Product type designation	3SE5
Manufacturer's article number	
• of the supplied operating lever	3SE5000-0AA52
Suitability for use safety switch	No

General technical data

Product function	
• positive opening	No
Shock resistance	
• acc. to IEC 60068-2-27	30 g / 11 ms
Mechanical service life (switching cycles)	
• typical	15 000 000
Reference code acc. to DIN EN 81346-2	T
Reference code acc. to DIN EN 61346-2	T
Active principle	mechanical
Design of the interface for safety-related communication	without

Enclosure

Coating of the enclosure	Other types
--------------------------	-------------

Drive Head

Design of the operating mechanism	Adjustable twist lever, adjustable-length high-grade steel lever, plastic roller 19 mm
Shape of the switch head	roller
Outer diameter of the switch head	19 mm

Communication/ Protocol

Design of the interface	without
-------------------------	---------

Ambient conditions

Explosion protection category for dust	none
--	------

Installation/ mounting/ dimensions

Mounting position	any
Mounting type	screw fixing

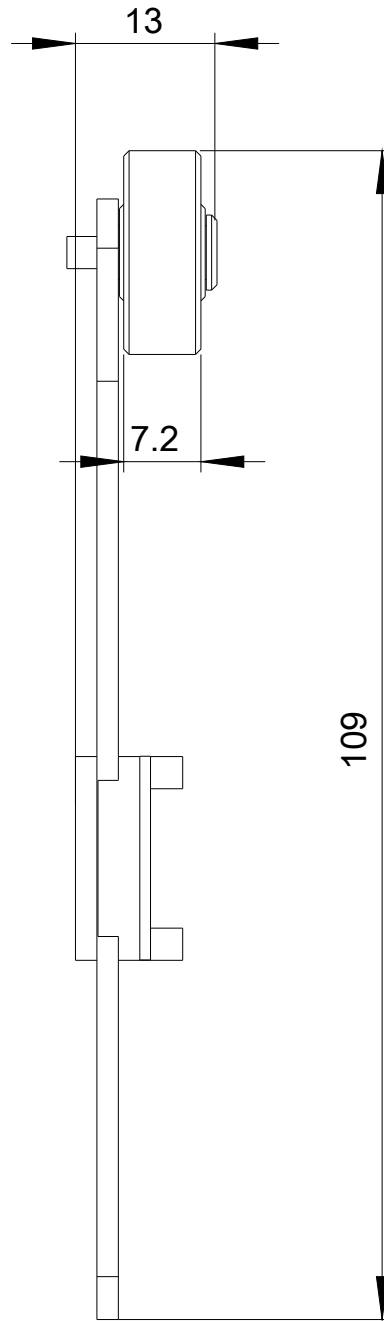
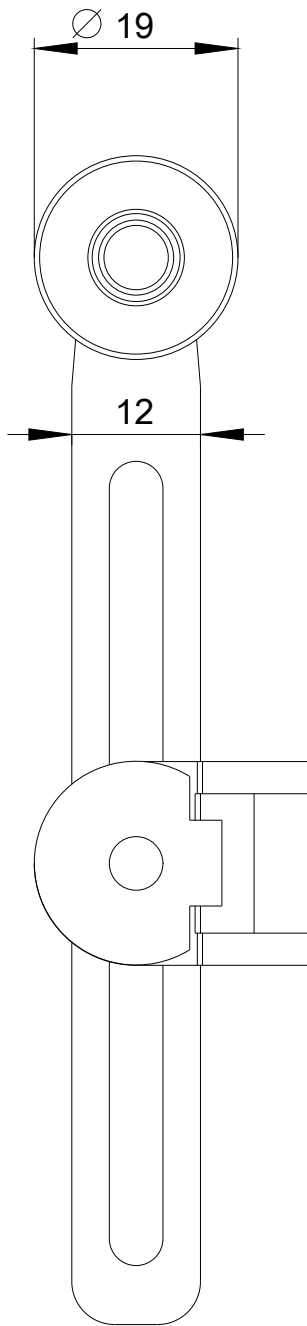
Certificates/ approvals

General Product Approval	Declaration of Conformity
 CSA  UR KC	 EAC  CE EG-Konf. Miscellaneous

Test Certificates	other
Type Test Certificates/Test Report	Confirmation

Further information

- Information- and Downloadcenter (Catalogs, Brochures,...)**
www.siemens.com/sirius/catalogs
- Industry Mall (Online ordering system)**
<https://mall.industry.siemens.com/mall/en/en/Catalog/product?mlfb=3SE5000-0AA52>
- Cax online generator**
<http://support.automation.siemens.com/WW/CAXorder/default.aspx?lang=en&mlfb=3SE5000-0AA52>
- Service&Support (Manuals, Certificates, Characteristics, FAQs,...)**
<https://support.industry.siemens.com/cs/ww/en/ps/3SE5000-0AA52>
- Image database (product images, 2D dimension drawings, 3D models, device circuit diagrams, EPLAN macros, ...)**
http://www.automation.siemens.com/bilddb/cax_de.aspx?mlfb=3SE5000-0AA52&lang=en



last modified:

07/26/2019