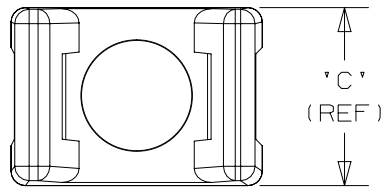
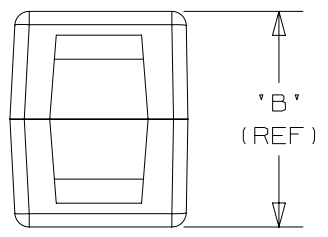
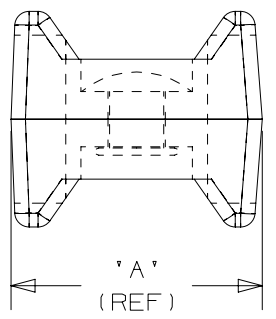


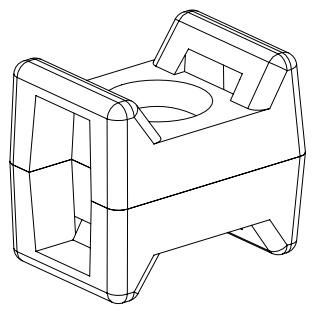
THIS COPY IS PROVIDED ON A RESTRICTED BASIS AND IS NOT TO BE USED IN ANY WAY DETRIMENTAL TO THE INTERESTS OF PANDUIT CORP.



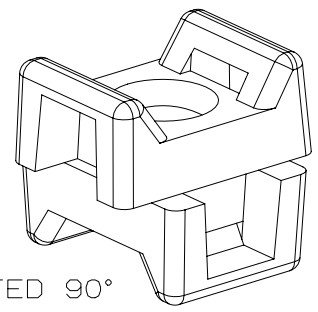
PANDUIT PART NO.*	DIMENSIONS			USE WITH ANY OF THESE CABLE TIES	WEIGHT lbs / 100 (g) / pcs.
	'A'	'B'	'C'		
TM3-X2-_/J	0.87 [22.10]	0.75 [19.05]	0.62 [15.75]	M, I, S, LH	0.97 [438.9]
TM1-X2-_/J	0.52 [13.21]	0.46 [11.68]	0.32 [8.13]	M	0.17 [77.1]



- NOTES:
- SEE www.panduit.com FOR CURRENT PART NUMBER SUFFIX DESIGNATION AND FOR PACKAGE SIZE AND PART COLOR.
 - CABLE TIE CROSS-SECTION CODE:
M = MINATURE
I = INTERMEDIATE
S = STANDARD
LH = LIGHT HEAVY
 - 03 RIVET MATERIAL: 5056-H32 ALUMINUM
 - PARTS WILL BE 100% APPEARANCE INSPECTED FOR MRJ.
 - 03 MILLIMETERS ARE IN ().



ROTATED 90°



REV	DATE	BY	CHK	APR	DESCRIPTION	ECN
03	06/08/15	RVU	DJW	JHAC	5056-H32 WAS 5056-S. ADDED NOTE 5.	GAECN02901
02	04/02/14	BWG	MPH	JADE	ADDED TM1-X2-_/J. ADDED NOTE 4.	10B015LK_DC
01	01/27/14	BWG	MPH	JADE	REVISED NOTES.	10B015LK_DC
R	01/24/14	BWG	MPH	JADE	DRAWING RELEASE.	10B015LK_DC

TITLE		SWIVEL TIE MOUNT - JAPAN (NYLON)		
		CUSTOMER DRAWING		
ITEM REVISION NAME		10B015LK/03		
DATASET FILE NAME		10B015LK_DC/03B - 10B015LK_REV03		
UNLESS OTHERWISE SPECIFIED, DIMENSIONAL TOLERANCES ARE: IN (mm)		PANDUIT MATERIAL: NYLON 6.6 DRAWING NUMBER: 10B015LK_DC		
.x ± .1 [2.54] .xxx ± .005 [.127] .xx ± .01 [.25] ANGLES ± 5 °				
		THIRD ANGLE PROJECTION		
DRAWN BY	DATE	CHK	SCALE	SIZE
BWG	1/24/14	MPH	1.5X	A