








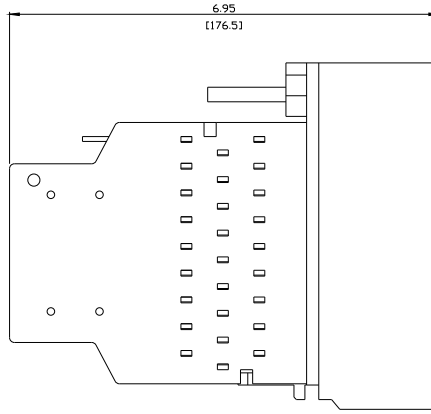
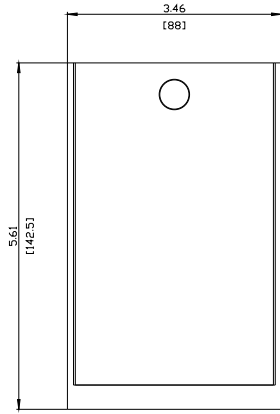
Arc Chute for circuit breakers fixed mounted, Frame Size 1, for 3WA2 breaking capacity class E, In = 800-2000A, for 3WA3 breaking capacity class E, In = 800-2000A, 1 piece

Approvals Certificates

General Product Approval		EMV	Test Certificates		
 EG-Konf.				<a href="#">Type Test Certificates/Test Report</a>	<a href="#">Special Test Certificate</a>
Test Certificates	Maritime application	other	Dangerous goods		
<a href="#">Miscellaneous</a>		<a href="#">Confirmation</a>	<a href="#">Dangerous goods information</a>		

Further information

- Information on the packaging  
<https://support.industry.siemens.com/cs/ww/en/view/109813875>
- Information- and Downloadcenter (Catalogs, Brochures,...)  
<http://www.siemens.com/lowvoltage/catalogs>
- Industry Mall (Online ordering system)  
<https://mall.industry.siemens.com/mall/en/en/Catalog/product?mlfb=3WA9111-1AS01>
- Service&Support (Manuals, Certificates, Characteristics, FAQs,...)  
<https://support.industry.siemens.com/cs/ww/en/ps/3WA9111-1AS01>
- Image database (product images, 2D dimension drawings, 3D models, device circuit diagrams, ...)  
[http://www.automation.siemens.com/bilddb/cax\\_en.aspx?mlfb=3WA9111-1AS01](http://www.automation.siemens.com/bilddb/cax_en.aspx?mlfb=3WA9111-1AS01)
- CAX-Online-Generator  
<http://www.siemens.com/cax>
- Tender specifications  
<http://www.siemens.com/specifications>



---

last modified:

4/13/2025 

