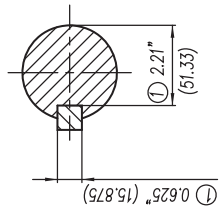


1/2"-13NC Tapped Hole for Grounding Both sides of Frame
 Barreno 1/2"-13NC para Tierra, en ambos lados de la Carcasa

- ① Tolerances According to NEMA Std.
- ② All these dimensions corresponding to assemblies and castings shall have a tolerance as per DIN standard 1686-GTB 19.
- ③ Not According to NEMA Std.



Keyseat detail
 Detalle Cuñero

CERTIFIED PRINT / CERTIFICACION			
CUSTOMER/CLIENTE			
SUN/PROTEC CLIENTE			
IP	FRM	FRANK/ARK	TYPE/PRO
			WOLFS
			PH/FA/S
			REZ

Tol. in mm. acc. to Tol. en mm. según DIN-1686-GTB-19	Over/desde	To/hasta
--	18	± 4.5
	30	± 4.7
	50	± 5
	80	± 5.5
	120	± 6
	180	± 6.5
	250	± 7
	315	± 7.5
	400	± 8
	500	± 8.5
	630	± 9.5
	800	± 10

European Projection/Proyeccion Europea	Dim. in inches/Dim. en pulg.
16/01/09	J. Carvajal
16/01/09	J. Carvajal
16/01/09	J. Carvajal

NOTE: Changed the type of motor	NOTE: Se cambio el tipo de motor
Scale/ Escala: ---	
Type/ Tipo: SD100 IEEE mNP FRAME/ARM. 447TS	
SIEMENS	
GUADALAJARA FACTORY	
3MSE 750 1284 a)	
Ref. Rep./3MSE 750 1284 c)	

Outline/Dimensiones	
"Short Shaft" / "Espiga Corta"	
SD100 IEEE mNP FRAME/ARM. 447TS	
3MSE 750 1284 a)	
Ref. Rep./3MSE 750 1284 c)	