

MLFB-Ordering data 1FG1512-5PG13-2CC2-Z
D12+K06+N23

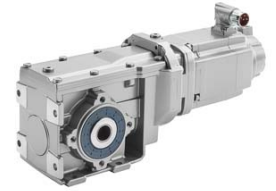


Figure similar

Client order no. :

Order no. :

Offer no. :

Remarks :

Item no. :

Consignment no. :

Project :

Gearbox data

Gear box type	K129	Radial force maximum	40000 N
Gearbox basic type	Bevel geared	Max. permissible radial force with Mmax	40000 N
Gearbox size	129	Moment of inertia	8.40 kgcm ²
Transmission stages	3	Torsional stiffness	421 Nm/°
Transmission (ratio)	127.77	Efficiency	0.94
Gear number relation	9583/75	Mounting position	M2-A
Output moment maximum (short-time)	4480 Nm	Mounting type	Torque plate
max. input speed (briefly)	4500 rpm	Output shaft version	Hollow shaft standard
Output speed short-time	35 rpm	Output shaft dimension	H70 mm
Emergency off output moment (1000 cycles)	7480 Nm	Gearbox flange diameter	-/-
		Figure 2 torque support	-

General tech. specifications

Degree of protection	IP65
Color of the housing	Standard painting (Anthracite RAL 7016)
Specification	CE / UL / CSA / EAC / cRUus
Net weight	174.82 kg
1m-sound pressure level L_{pA} (ToI.+3dB(A))	75
Plug position	top (default) (2)
Connector size	1.5

Lubrication and sealing

Gear oil	Mineral oil CLP ISO VG220
Output shaft sealing	Standard
Oil charge	13.20 l

MLFB-Ordering data 1FG1512-5PG13-2CC2-Z
D12+K06+N23



Figure similar

Motor data		Limiting data	
Motor type	Permanent-magnet synchronous motor	Maximum speed (short-time)	5000 rpm
Motor type	Compact	Maximum torque	80.00 Nm
DC-link voltage, max.	510...720V	Motor current short term	63.0 A
Shaft height	100 mm	Optimum operating point	
Cooling	Natural cooling	Optimum speed	2580 rpm
Rated speed	3000 rpm	Optimum power	4.00 kW
Rated torque (100K)	12.30 Nm	Recommended Motor Module	
Rated power	3.86 kW	Rated inverter current	18.0 A
Rated current (100K)	9.60 A	Maximum inverter current	54.0 A
Static torque	24.50 Nm	Maximum torque	72.0 Nm
Static current	17.30 A	Holding brake	
Moment of inertia	87.00 kgcm ²	Holding brake	with holding brake
Efficiency η	92 %	Holding brake version	Permanent-magnet brake
Temperature monitoring	Pt1000 temperature sensor	Power supply voltage	DC 24 V \pm 10 %
Encoder system	Resolver R14DQ: resolver 14 bits (resolution 16384, internal 2-pole)	Braking torque M_{1Br} / M_{2Br}	25.00 Nm
		Holding torque M_{4Br}	43.00 Nm
		Opening time	300.0 ms
		Closing time	70.0 ms
		Maximum switching energy per braking action	3380.0 J

Info servo geared motor

Outside the standard temperature range of -10 to +40 °C, further selectable options must be observed, in addition to the lubricant selection.

Further, you have to check the suitability of the components and options used for the requested temperature range.

SIEMENS

Data sheet for SIMOTICS S-1FG1

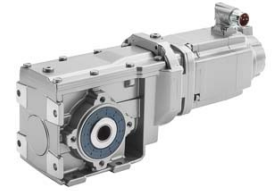


Figure similar

MLFB-Ordering data 1FG1512-5PG13-2CC2-Z
D12+K06+N23

Options

D12	M2-A for bevel and worm gearboxes
K06	Mineral oil CLP ISO VG220
N23	Standard holding brake (permanent magnet brake)

Standards

Compliance with standards CE / UL / CSA / EAC / cRUus

CE marking EN 60034