

Coordinate switch, 22 mm, round, plastic with metal front ring, black, 2 switch positions, vertical, momentary contact type, with mechanical interlocking, Z=50-unit packaging



| | |
|--------------------------|--|
| Product brand name | SIRIUS ACT |
| Product designation | Coordinate switches |
| Design of the product | Actuating/signaling element |
| Product type designation | 3SU1 |
| Product line | Plastic with metal front ring, matt, 22 mm |

| Actuator | |
|---|------------------------------|
| Design of the operating mechanism | with mechanical interlocking |
| Manner of function of the actuating element | momentary contact type |
| Direction of actuation | Vertical |
| Color | |
| • of the actuating element | black |
| Material of the actuating element | plastic |
| Shape of the actuating element | Extended handle |
| Outer diameter of the actuating element | 30.5 mm |
| Type of unlocking device | push-to-unlatch mechanism |
| Number of switching positions | 2 |
| Maximum deflection angle [°] | 30° |

| Front ring | |
|------------------------------|-----|
| Product component front ring | Yes |

| | |
|----------------------------|-------------|
| Design of the front ring | high |
| Material of the front ring | Metal, matt |
| Color of the front ring | sand gray |

General technical data

| | |
|--|---|
| Protection class IP | IP65, IP67 |
| Degree of protection NEMA rating | NEMA 1, 2, 3, 3R, 4, 4X, 12, 13 |
| Shock resistance | <ul style="list-style-type: none"> • acc. to IEC 60068-2-27 Sinusoidal half-wave 50 g / 11 ms • for railway applications acc. to DIN EN 61373 Category 1, Class B |
| Vibration resistance | <ul style="list-style-type: none"> • acc. to IEC 60068-2-6 10 ... 500 Hz: 5g • for railway applications acc. to DIN EN 61373 Category 1, Class B |
| Operating frequency maximum | 3 600 1/h |
| Mechanical service life (switching cycles) | <ul style="list-style-type: none"> • as operating period per direction of actuation typical 500 000 |
| Reference code acc. to DIN EN 81346-2 | S |
| Reference code acc. to DIN EN 61346-2 | S |

Safety related data

| | |
|--|---|
| B10 value | <ul style="list-style-type: none"> • with high demand rate acc. to SN 31920 250 000 |
| Proportion of dangerous failures | <ul style="list-style-type: none"> • with low demand rate acc. to SN 31920 20 % • with high demand rate acc. to SN 31920 20 % |
| Failure rate [FIT] | <ul style="list-style-type: none"> • with low demand rate acc. to SN 31920 100 FIT |
| T1 value for proof test interval or service life acc. to IEC 61508 | 20 y |

Ambient conditions

| | |
|---|--|
| Ambient temperature | <ul style="list-style-type: none"> • during operation -25 ... +70 °C • during storage -40 ... +80 °C |
| Environmental category during operation acc. to IEC 60721 | 3M6, 3S2, 3B2, 3C3, 3K6 (with relative air humidity of 10 ... 95 %) |





Installation/ mounting/ dimensions


| | |
|---|---------|
| Height | 30.5 mm |
| Width | 30.5 mm |
| Shape of the installation opening | round |
| Mounting diameter | 22.3 mm |
| Positive tolerance of installation diameter | 0.4 mm |
| Mounting height | 75.6 mm |
| Installation width | 30.5 mm |


Installation depth

25.5 mm

Certificates/ approvals

| General Product Approval | Declaration of Conformity | Test Certificates |
|---|---|---|
|  CSA |  UL |  |
|  EG-Konf. | Miscellaneous | Type Test Certificates/Test Report |

| Test Certificates | Marine / Shipping |
|--|---|
| Special Test Certificate |  ABS |
| |  LRS |
| |  PRS |
| |  RINA |
| |  RMRS |

| Marine / Shipping | other |
|--|------------------------------|
|  DNV-GL DNVGL.COM/AF | Confirmation |

Further information

Information- and Downloadcenter (Catalogs, Brochures,...)

<https://www.siemens.com/ic10>

Industry Mall (Online ordering system)

<https://mall.industry.siemens.com/mall/en/en/Catalog/product?mlfb=3SU1030-7BD10-0AA0-Z X90>

Cax online generator

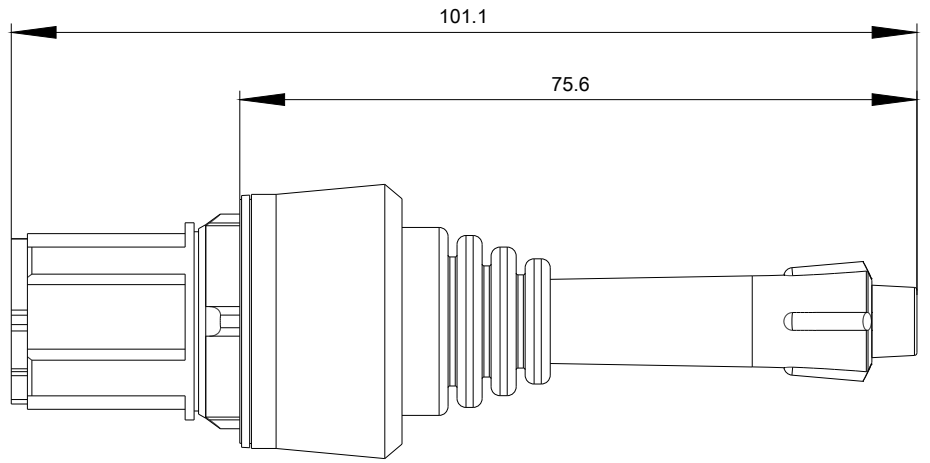
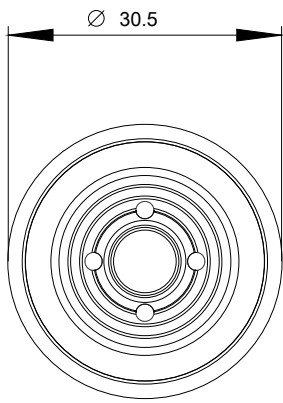
<http://support.automation.siemens.com/WW/CAXorder/default.aspx?lang=en&mlfb=3SU1030-7BD10-0AA0-Z X90>

Service&Support (Manuals, Certificates, Characteristics, FAQs,...)

<https://support.industry.siemens.com/cs/ww/en/ps/3SU1030-7BD10-0AA0-Z X90>

Image database (product images, 2D dimension drawings, 3D models, device circuit diagrams, EPLAN macros, ...)

http://www.automation.siemens.com/bilddb/cax_de.aspx?mlfb=3SU1030-7BD10-0AA0-Z X90&lang=en



last modified:

02/06/2020