

SIEMENS

Stored Energy Operator

Accionamiento motor con acumulador de energia
 Commande motorisée à accumulation d'energie
 (avec déclencheur électrique et mécanique)

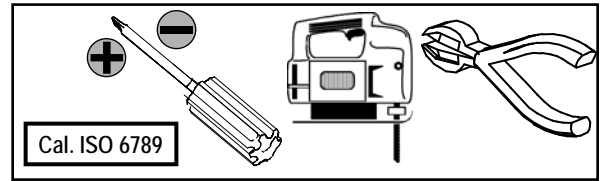
	U.S. Cat. No.	Euro Order No.	U.S. Cat. No.	Euro Order No.
Item:	SEALB	3VL9400-3MJ01	SEAMB	3VL9600-3MJ01
	SEALM	3VL9400-3ML01	SEAMM	3VL9600-3ML01
	SEALY	3VL9400-3MS01	SEAMY	3VL9600-3MS01
	SEALN	3VL9400-3MN01	SEAMN	3VL9600-3MN01
	SEALR	3VL9400-3MQ01	SEAMR	3VL9600-3MQ01

For Use With Frame JG, LG, MG
 Para Usar Con Caja Base JG, LG, MG

Installation Instructions / Instructivo de Instalación

	 Danger	 Peligro	 Danger!
	Hazardous Voltage Will cause death or serious injury	Tensión peligrosa. Puede causar la muerte o lesiones graves.	Tension dangereuse. Danger de mort ou risque de blessures graves.
	Turn off and lock out all power supplying this device before working on this device. Replace all covers before power supplying this device is turned on.	Desenergice totalmente antes de instalar o darle servicio. Reemplace todas las barreras y cubiertas antes de energizar el interruptor.	Couper l'alimentation de l'appareil et barrer avant de travailler. Remplacez tous les couverts avant que l'approvisionnement de pouvoir soit alimenté.

Use only with Siemens certified Components.
 Utilizar únicamente con componentes certificados de Siemens.
 A utiliser uniquement avec les composants certifiés Siemens.

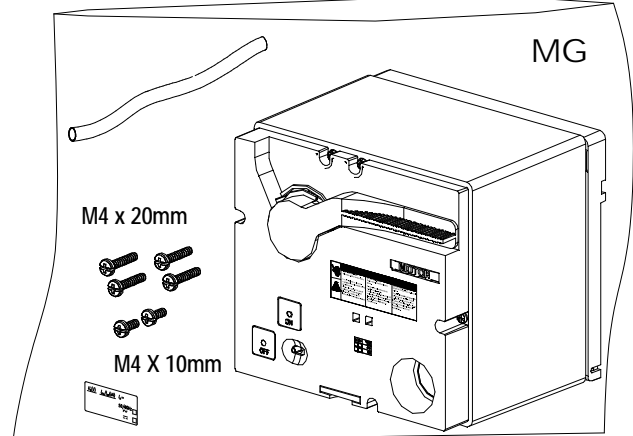
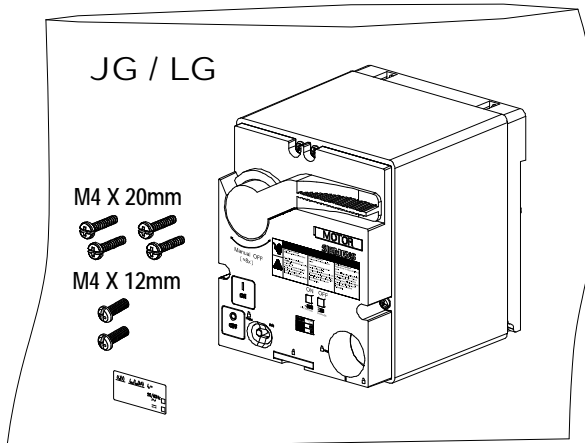


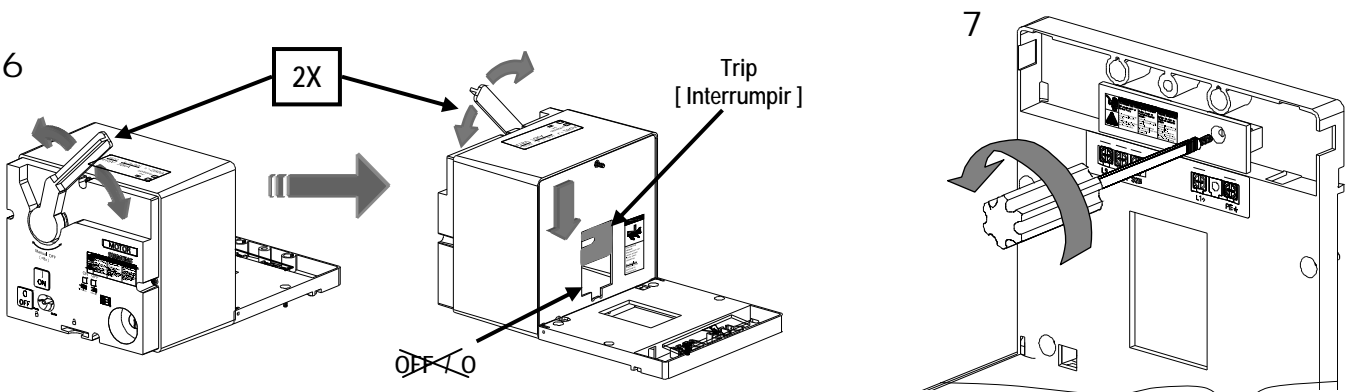
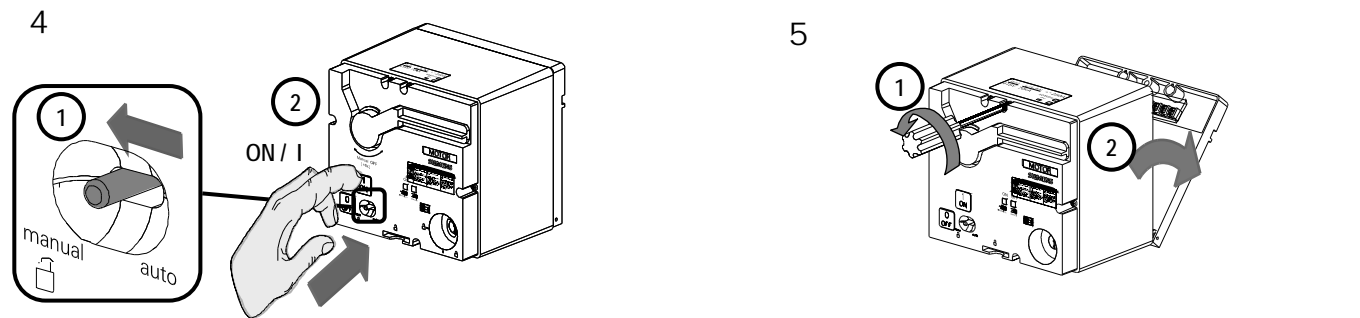
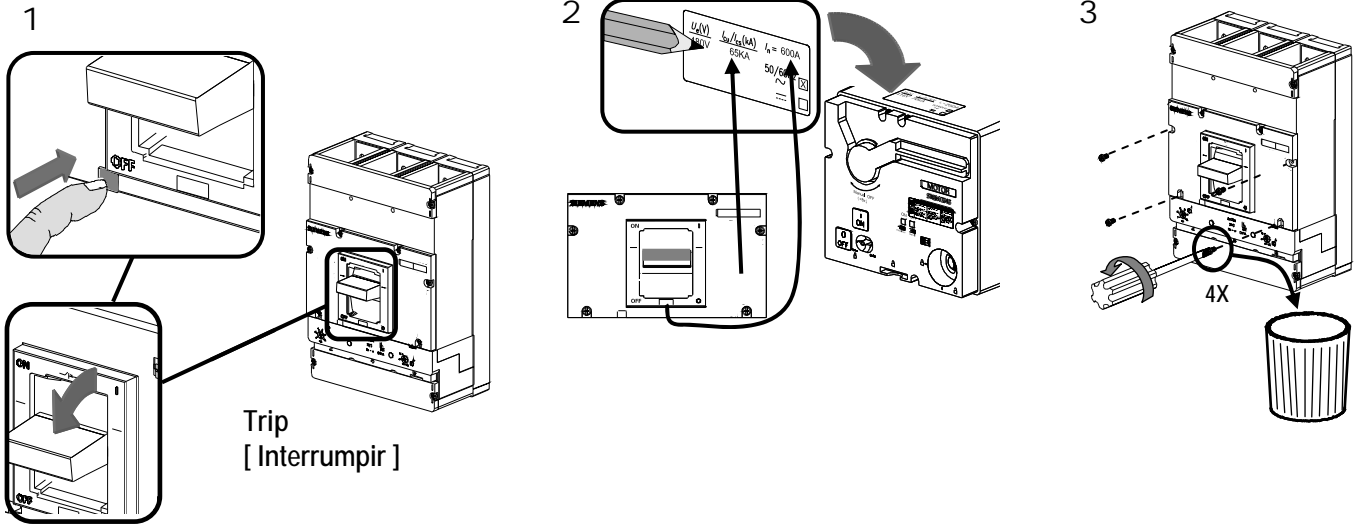
NOTE - These instructions do not purport to cover all details or variations in equipment, or to provide for every possible contingency to be met in connection with installation, operation or maintenance. Should further information be desired or should particular problems arise, which are not covered sufficiently for the purchaser's purposes, the matter should be referred to the local Siemens sales office. The contents of this instruction manual shall not become part of or modify any prior or existing agreement, commitment or relationship. The sales contract contains the entire obligation of Siemens. The warranty contained in the contract between the parties is the sole warranty of Siemens. Any statements contained herein do not create new warranties or modify the existing warranty.

Trademarks - Unless otherwise noted, all names identified by ® are registered trademarks of Siemens AG or Siemens Industry, Inc. The remaining trademarks in this publication may be trademarks whose use by third parties for their own purposes could violate the rights of the owner.

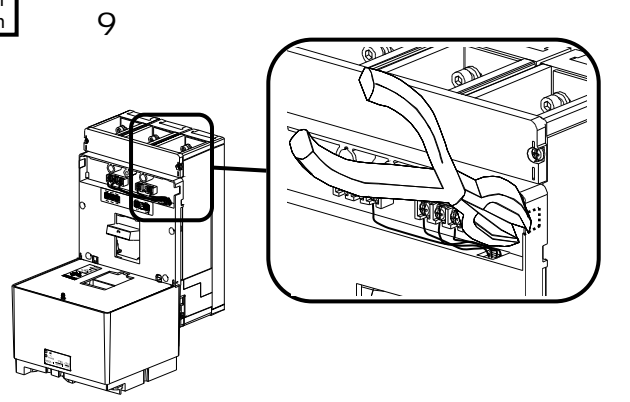
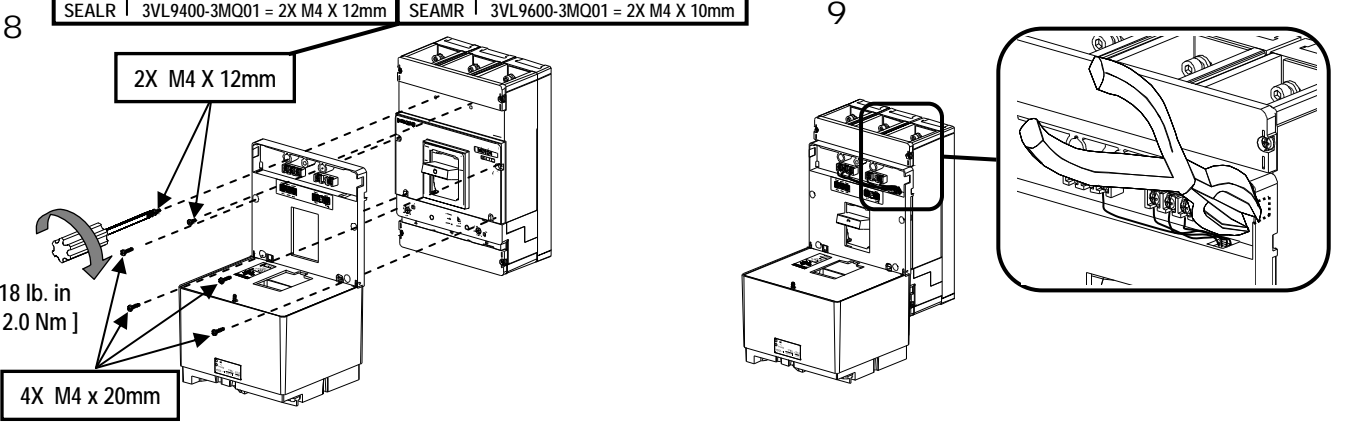
SEALB	3VL9400-3MJ01 = 24 Vdc
SEALM	3VL9400-3ML01 = 42-48 V ac/dc
SEALY	3VL9400-3MS01 = 60 V ac/dc
SEALN	3VL9400-3MN01 = 110-127 V ac/dc
SEALR	3VL9400-3MQ01 = 220-250 V ac/dc

SEAMB	3VL9600-3MJ01 = 24 Vdc
SEAMM	3VL9600-3ML01 = 42-48 V ac/dc
SEAMY	3VL9600-3MS01 = 60 V ac/dc
SEAMN	3VL9600-3MN01 = 110-127 V ac/dc
SEAMR	3VL9600-3MQ01 = 220-250 V ac/dc

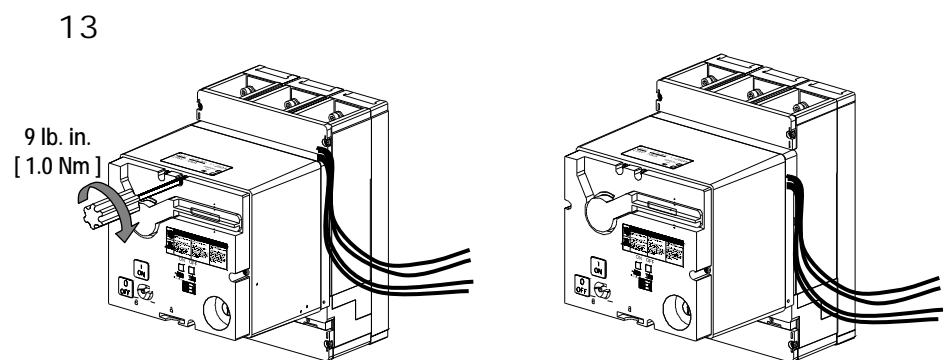
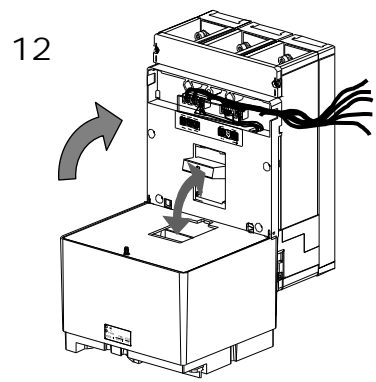
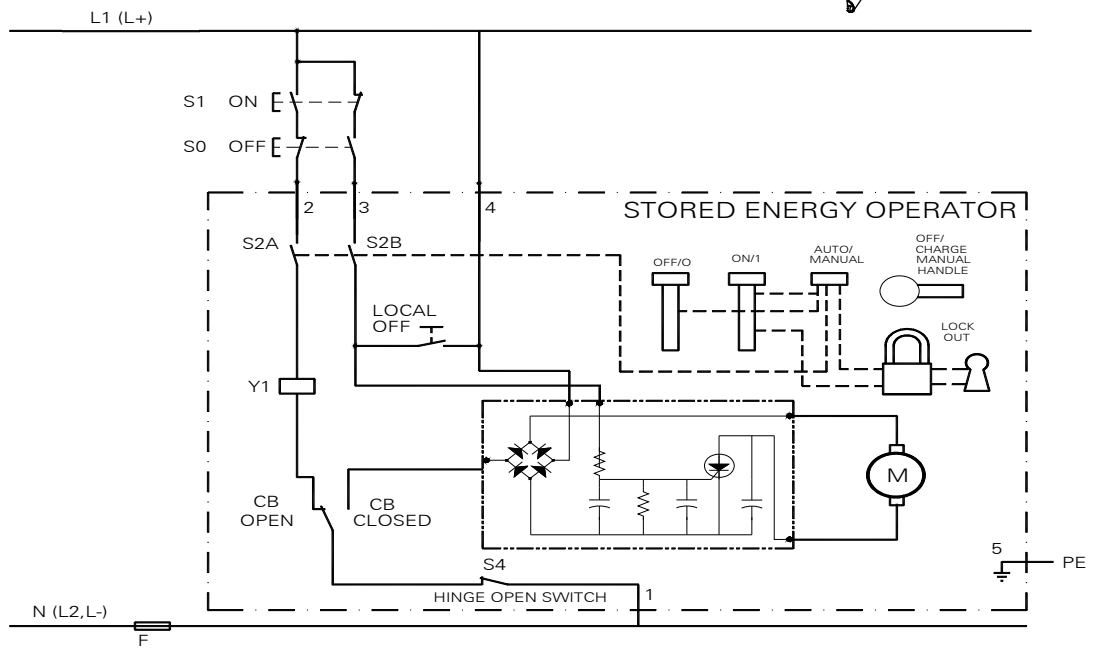
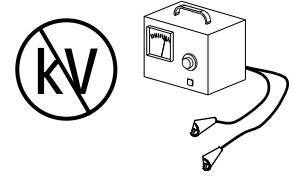
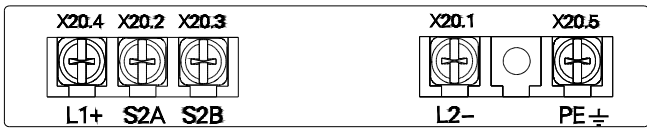
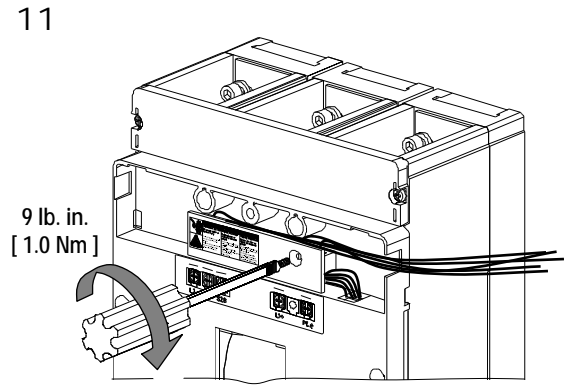
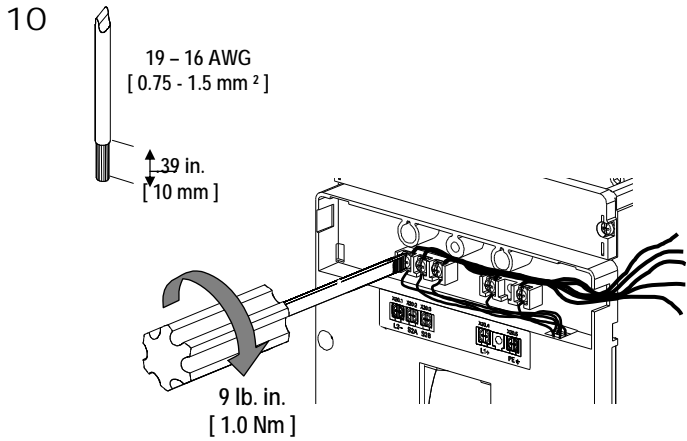




SEALB	3VL9400-3MJ01 = 2X M4 X 12mm	SEAMB	3VL9600-3MJ01 = 2X M4 X 10mm
SEALM	3VL9400-3ML01 = 2X M4 X 12mm	SEAMM	3VL9600-3ML01 = 2X M4 X 10mm
SEALY	3VL9400-3MS01 = 2X M4 X 12mm	SEAMY	3VL9600-3MS01 = 2X M4 X 10mm
SEALN	3VL9400-3MN01 = 2X M4 X 12mm	SEAMN	3VL9600-3MN01 = 2X M4 X 10mm
SEALR	3VL9400-3MQ01 = 2X M4 X 12mm	SEAMR	3VL9600-3MQ01 = 2X M4 X 10mm



	⚠ Danger	⚠ Peligro	⚠ Danger!
	Hazardous Voltage Will cause death or serious injury	Tensión peligrosa. Puede causar la muerte o lesiones graves.	Tension dangereuse. Danger de mort ou risque de blessures graves.
	Turn off and lock out all power supplying this device before working on this device. Replace all covers before power supplying this device is turned on.	Desenergice totalmente antes de instalar o darle servicio. Reemplace todas las barreras y cubiertas antes de energizar el interruptor.	Couper l'alimentation de l'appareil et barrer avant de travailler. Remplacez tous les couverts avant que l'approvisionnement de pouvoir soit alimenté.





Danger

Hazardous Voltage
Will cause death or serious injury



Turn off and lock out all power supplying this device before working on this device.
Replace all covers before power supplying this device is turned on.



Peligro

Tensión peligrosa.
Puede causar la muerte o lesiones graves.

Desenergice totalmente antes de instalar o darle servicio.
Reemplace todas las barreras y cubiertas antes de energizar el interruptor.



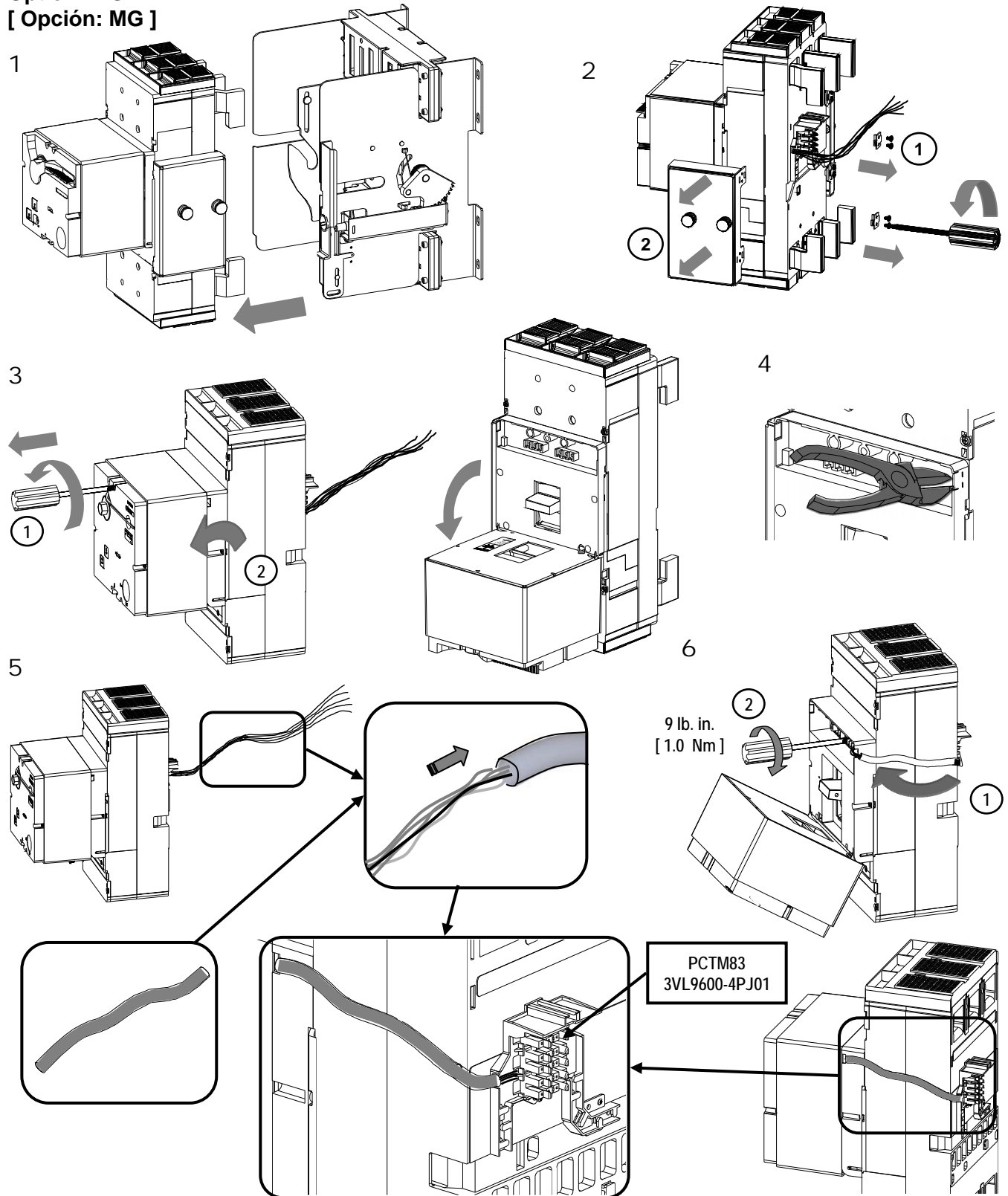
Danger!

Tension dangereuse.
Danger de mort ou risque de blessures graves.

Couper l'alimentation de l'appareil et barrer avant de travailler.
Remplacez tous les couverts avant que l'alimentation de pouvoir soit alimenté.

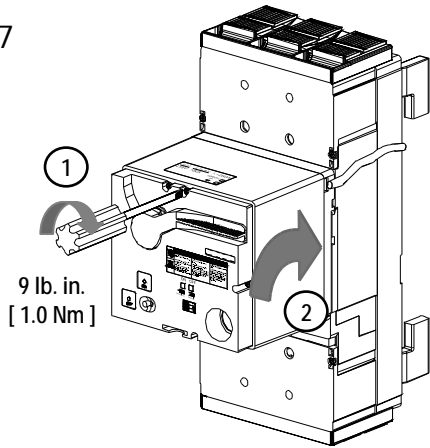
Option: MG

[Opción: MG]

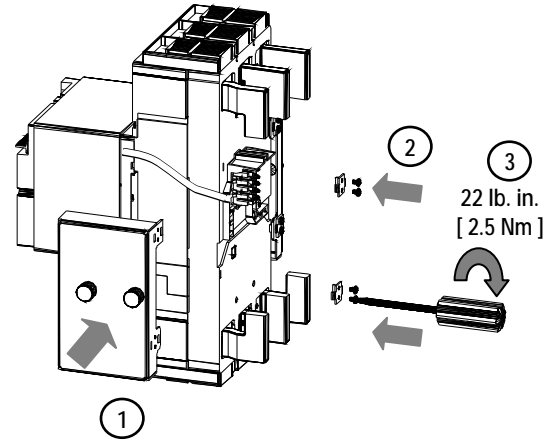


Option: MG
[Opción: MG]

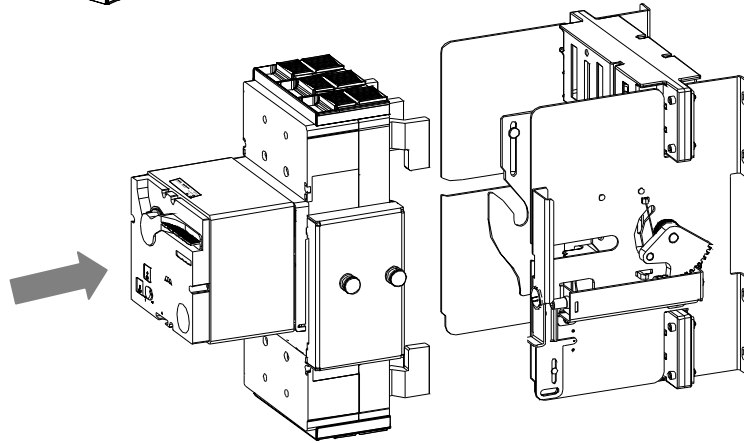
7



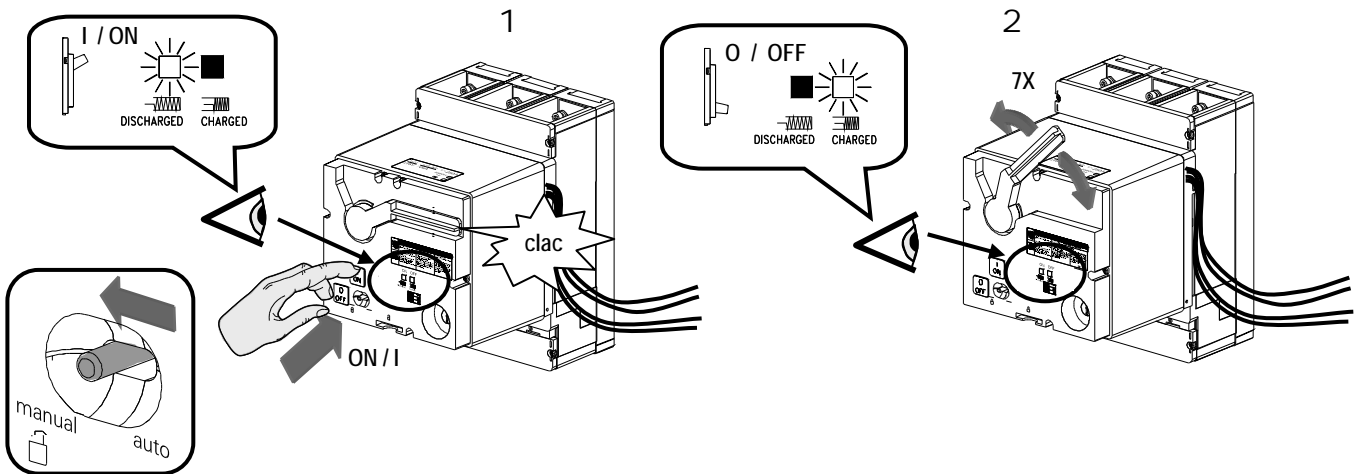
8



9

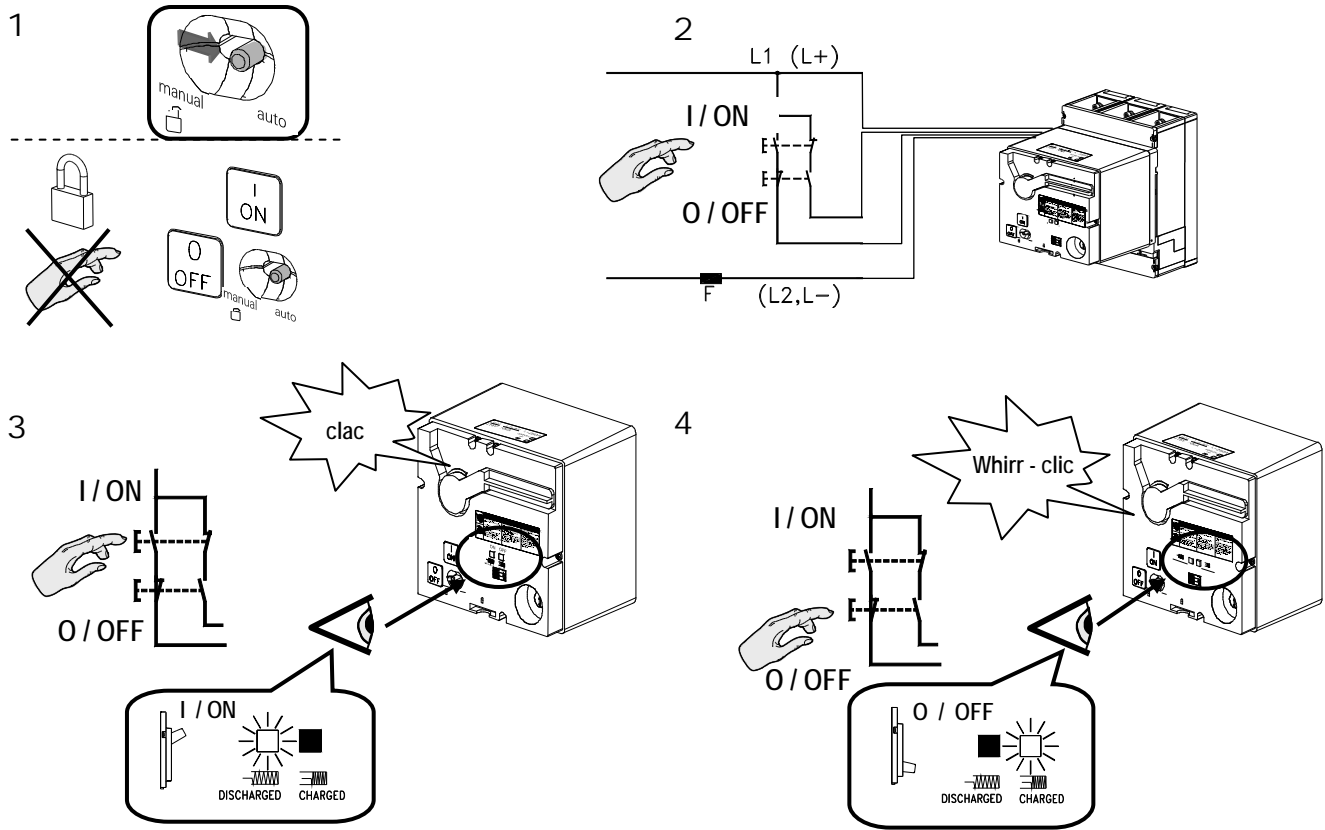


Test - Manual:
[Prueba – Manual:]

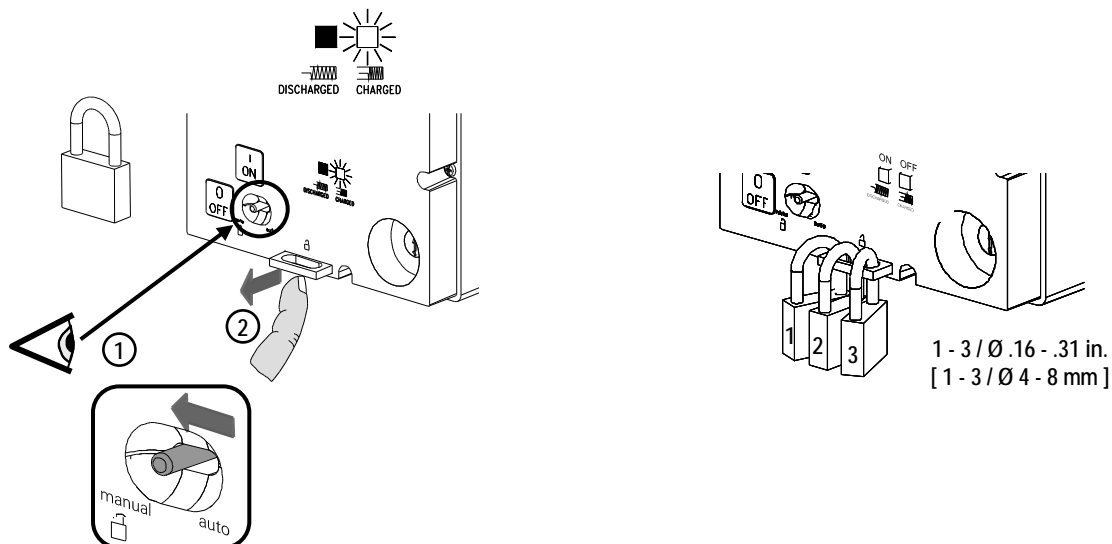


	<p>Danger</p> <p>Hazardous Voltage Will cause death or serious injury</p>	<p>Peligro</p> <p>Tensión peligrosa. Puede causar la muerte o lesiones graves.</p>	<p>Danger!</p> <p>Tension dangereuse. Danger de mort ou risque de blessures graves.</p>
	<p>Turn off and lock out all power supplying this device before working on this device. Replace all covers before power supplying this device is turned on.</p>	<p>Desenergice totalmente antes de instalar o darle servicio. Reemplace todas las barreras y cubiertas antes de energizar el interruptor.</p>	<p>Couper l'alimentation de l'appareil et barrer avant de travailler. Remplacez tous les couverts avant que l'approvisionnement de pouvoir soit alimenté.</p>

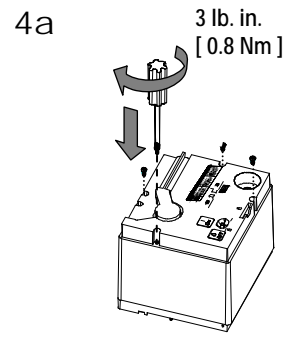
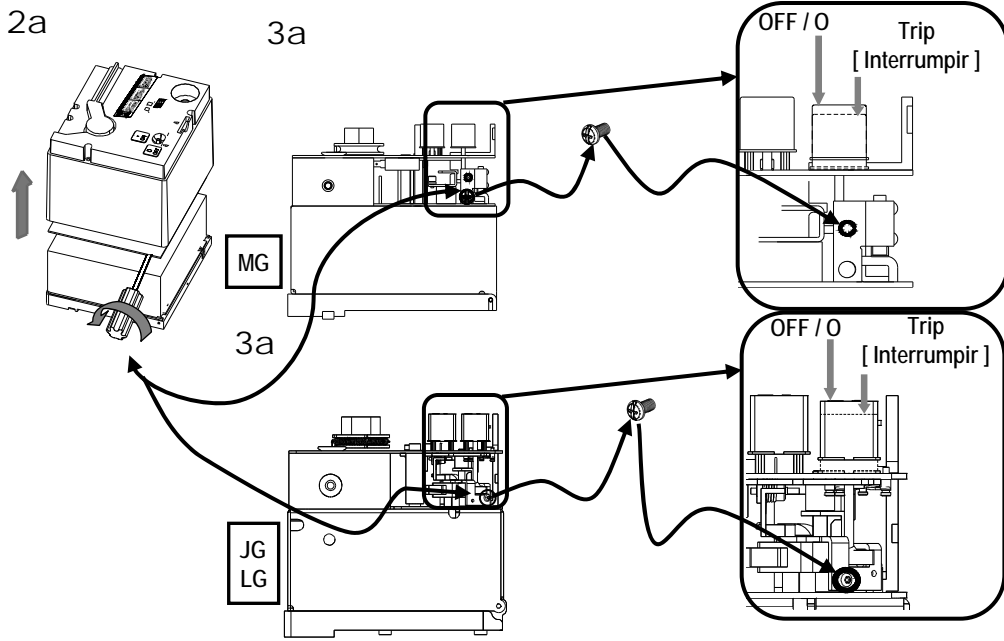
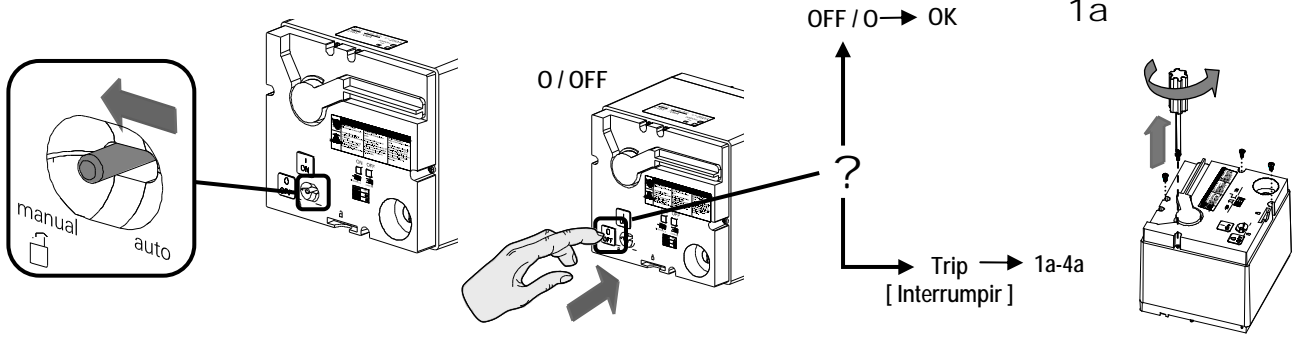
Test - Auto:
[Prueba – Automático:]



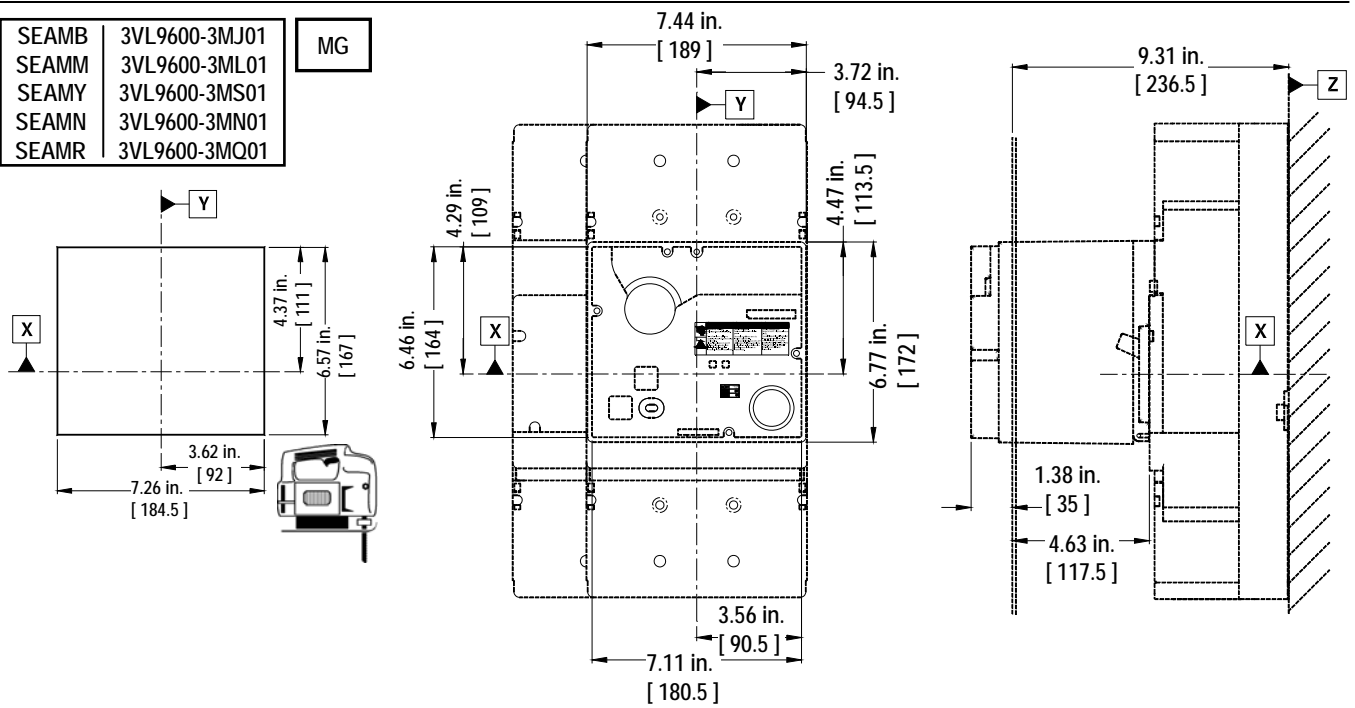
Option:
[Opción:]



Manual Trip - Option
[Interrumpir Manual – Opción]



SEAMB	3VL9600-3MJ01	MG
SEAMM	3VL9600-3ML01	
SEAMY	3VL9600-3MS01	
SEAMN	3VL9600-3MN01	
SEAMR	3VL9600-3MQ01	





Danger

Hazardous Voltage
Will cause death or serious injury



Turn off and lock out all power supplying this device before working on this device.
Replace all covers before power supplying this device is turned on.



Peligro

Tensión peligrosa.
Puede causar la muerte o lesiones graves.

Desenergice totalmente antes de instalar o darle servicio.
Reemplace todas las barreras y cubiertas antes de energizar el interruptor.



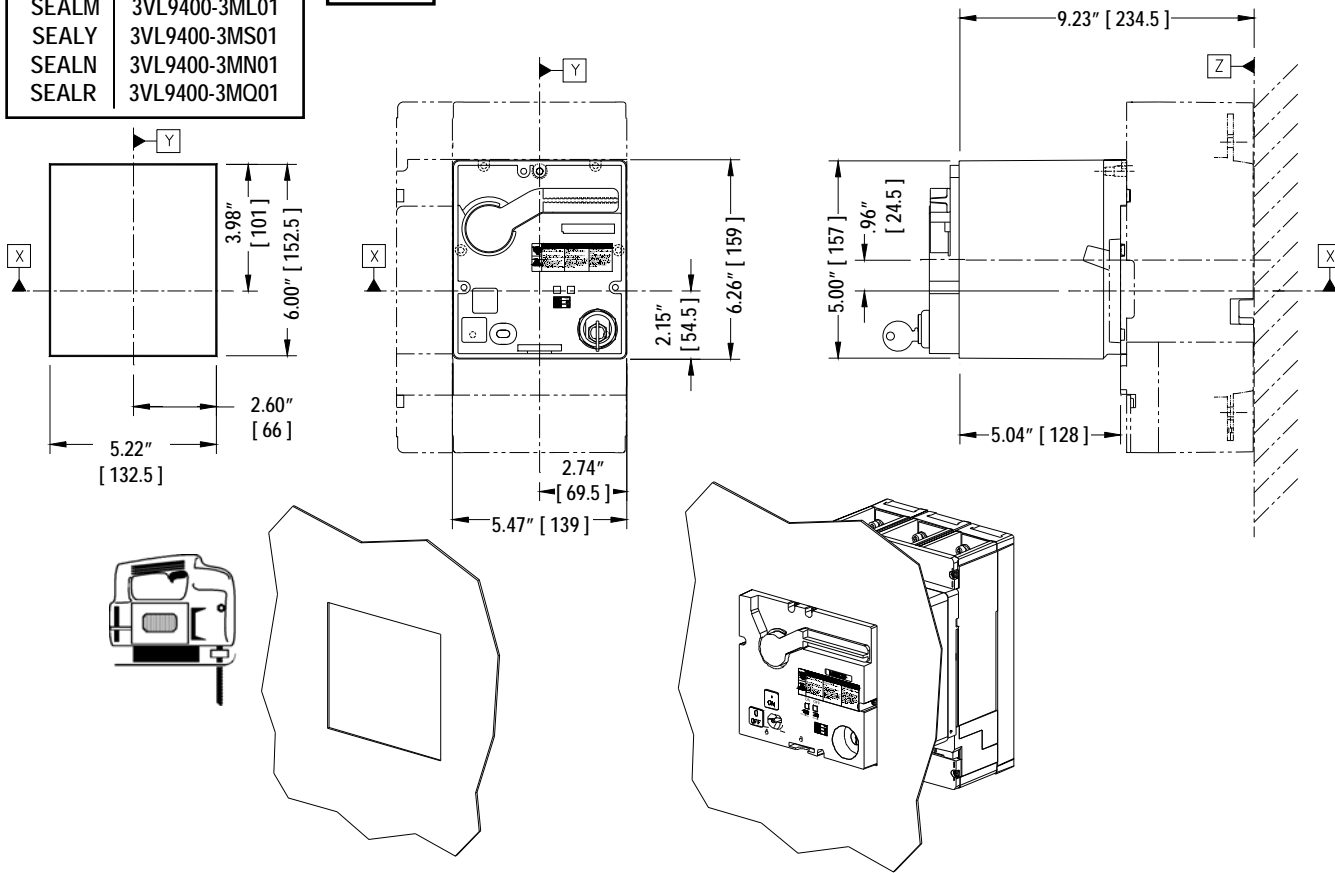
Danger!

Tension dangereuse.
Danger de mort ou risque de blessures graves.

Couper l'alimentation de l'appareil et barrer avant de travailler.
Remplacez tous les couverts avant que l'alimentation de pouvoir soit alimenté.

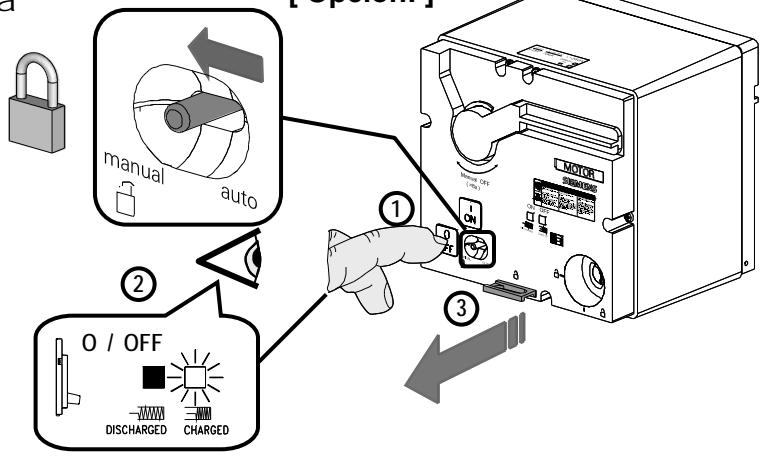
SEALB	3VL9400-3MJ01
SEALM	3VL9400-3ML01
SEALY	3VL9400-3MS01
SEALN	3VL9400-3MN01
SEALR	3VL9400-3MQ01

JG, LG

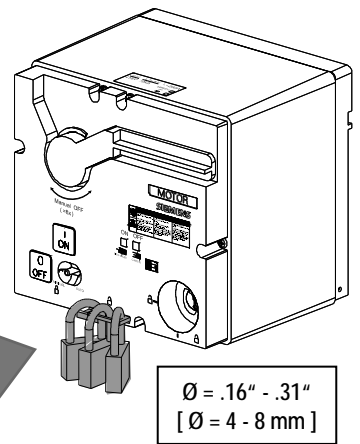


Option:
[Opción:]

1a



1b



Bestell-Nr. / Order No.: 3ZX1012-0VL68-2AA4 For Support in Europe refer to : Internet: www.siemens.de/lowvoltage/technical-assistance GWA 4NEB 179 6841-10 DS 03

Technical Support: Toll Free: 1-800-241-4453 Internet: www.usa.siemens.com/powerdistribution