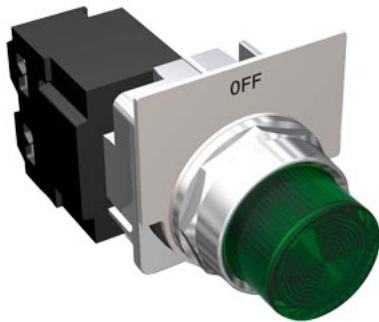


PILOT LITE,"FK" GREEN "OFF" W/AUX 120V



product brand name	Enclosed Control Product Accessories
design of the product	30 mm Green OFF Pilot Light, 120VAC
product type designation	Pilot light
special product feature	Transformer type
General technical data	
weight [lb]	0.55 lb(av)
Height x Width x Depth [in]	2 × 1.7 × 3.5 in
touch protection against electrical shock	finger-safe
ambient temperature [°F]	
• during storage	-40 ... +185 °F
• during operation	-31 ... +158 °F
ambient temperature	
• during storage	-40 ... +85 °C
• during operation	-35 ... +70 °C
country of origin	Mexico
material / of the front ring	Metal with chrome plating
accessories / included	Wires
control voltage / at AC / rated value	108 ... 132 V
Lamp	
number of lampholders	1
number of indicator lights	1
type of light source	Incandescent
Lens	
color / of the cover cap	Green
model of the lens	round
material / of the lens	Plastic
Legend	
material	Brushed aluminum
marking / of inscription plate	OFF
color / of inscription plate	Aluminum foreground / Black background
Mounting/wiring	
fastening method	rear mounting
type of electrical connection	screw terminal
tightening torque [lbf·in] / with screw-type terminals	7 ... 9 lbf·in
type of connectable conductor cross-sections / for AWG cables / for control connection / with screw-type terminals / single or multi-stranded	2x (18 ... 12 AWG)
temperature / of the conductor / for control connection / with screw-type terminals / maximum permissible	75 °C
material / of the conductor	CU
Certificates/ approvals	

Further information

Industry Mall (Online ordering system)

<https://mall.industry.siemens.com/mall/en/us/Catalog/product?mfb=US2:49SPL0AGF>

Service&Support (Manuals, Certificates, Characteristics, FAQs,...)

<https://support.industry.siemens.com/cs/ww/en/ps/US2:49SPL0AGF>

Image database (product images, 2D dimension drawings, 3D models, device circuit diagrams, EPLAN macros, ...)

http://www.automation.siemens.com/bilddb/cax_us.aspx?mfb=US2:49SPL0AGF&lang=en

last modified:

4/8/2024 