

MLFB-Ordering data 1FG1511-1QF42-2HH2-Z
D24+G23+K06+N23+Q91

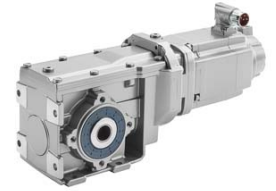


Figure similar

Client order no. :

Order no. :

Offer no. :

Remarks :

Item no. :

Consignment no. :

Project :

Gearbox data

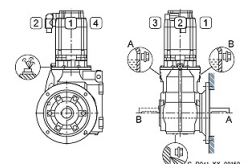
Gear box type	K109	Radial force maximum	24500 N
Gearbox basic type	Bevel geared	Max. permissible radial force with Mmax	24500 N
Gearbox size	109	Moment of inertia	1.30 kgcm ²
Transmission stages	3	Torsional stiffness	291 Nm/°
Transmission (ratio)	216.65	Efficiency	0.93
Gear number relation	107242/495	Mounting position	M4-B
Output moment maximum (short-time)	3070 Nm	Mounting type	Housing flange (C type)
max. input speed (briefly)	4500 rpm	Output shaft version	Solid shaft standard
Output speed short-time	21 rpm	Output shaft dimension	V60x120 mm
Emergency off output moment (1000 cycles)	4930 Nm	Gearbox flange diameter	-/-
		Figure 2 torque support	-

General tech. specifications

Degree of protection	IP65
Color of the housing	Standard painting (Anthracite RAL 7016)
Specification	CE / UL / CSA / EAC / cRUus
Net weight	117.42 kg
1m-sound pressure level L_{pA} (ToI.+3dB(A))	75
Plug position	right (1)
Adapter flange position	top (default) (2)

Lubrication and sealing

Gear oil	Mineral oil CLP ISO VG220
Output shaft sealing	Seal longer service life
Oil charge	10.70 l



MLFB-Ordering data 1FG1511-1QF42-2HH2-Z
D24+G23+K06+N23+Q91



Figure similar

Motor data		Limiting data	
Motor type	Permanent-magnet synchronous motor	Maximum speed (short-time)	6000 rpm
Motor type	Compact	Maximum torque	61.00 Nm
DC-link voltage, max.	510...720V	Motor current short term	28.5 A
Shaft height	80 mm	Optimum operating point	
Cooling	Natural cooling	Optimum speed	2000 rpm
Rated speed	2000 rpm	Optimum power	2.90 kW
Rated torque (100K)	13.90 Nm	Recommended Motor Module	
Rated power	2.91 kW	Rated inverter current	9.0 A
Rated current (100K)	6.30 A	Maximum inverter current	27.0 A
Static torque	18.70 Nm	Maximum torque	58.4 Nm
Static current	8.00 A	Holding brake	
Moment of inertia	35.50000 kgcm ²	Holding brake	with holding brake
Efficiency η	93 %	Holding brake version	Permanent-magnet brake
Temperature monitoring	Pt1000 temperature sensor	Power supply voltage	DC 24 V \pm 10 %
Connector size	1	Braking torque M_{2Br}	11.00 Nm
		Holding torque M_{4Br}	22.00 Nm
		Opening time	200.0 ms
		Closing time	60.0 ms
Encoder system	Encoder AS20DQI: absolute encoder single-turn 20 bits	Maximum switching energy per braking action	1400.0 J

Info servo geared motor

Outside the standard temperature range of -10 to +40 °C, further selectable options must be observed, in addition to the lubricant selection.

Further, you have to check the suitability of the components and options used for the requested temperature range.

MLFB-Ordering data 1FG1511-1QF42-2HH2-Z
D24+G23+K06+N23+Q91

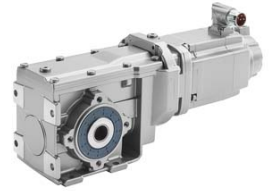


Figure similar

Options

D24	M4-B for bevel and worm gearboxes
G23	Seal longer service life
K06	Mineral oil CLP ISO VG220
N23	Standard holding brake (permanent magnet brake)
Q91	Plug position right

Standards

Compliance with standards CE / UL / CSA / EAC / cRUus

CE marking EN 60034