

pushbutton, high, green, for pushbutton, with laser labeling, inscription or symbol Customer-specific selection with SIRIUS ACT configurator (CIN)

<b>Product brand name</b>	SIRIUS ACT
<b>Product designation</b>	Button
<b>Design of the product</b>	raised
<b>Product type designation</b>	3SU1

### Actuator

<b>Outer diameter of the actuating element</b>	23.7 mm
--	---------

### Ambient conditions

Environmental category during operation acc. to IEC 60721	3M6, 3S2, 3B2, 3C3, 3K6 (with relative air humidity of 10 ... 95 %)
---	---

### Installation/ mounting/ dimensions

<b>Depth</b>	7.4 mm
--------------	--------

### Accessories

<b>Material of accessory</b>	Plastic
<b>Color of accessory</b>	green

### Certificates/ approvals

General Product Approval	Declaration of Conformity	Test Certificates
--------------------------	---------------------------	-------------------



[Miscellaneous](#)

[Type Test Certificates/Test Report](#)

### Marine / Shipping



### other

[Confirmation](#)

### Further information

**Information- and Downloadcenter (Catalogs, Brochures,...)**

<https://www.siemens.com/ic10>

**Industry Mall (Online ordering system)**

<https://mall.industry.siemens.com/mall/en/en/Catalog/product?mlfb=3SU1900-0FS40-0AA0-Z Y19>

**Cax online generator**

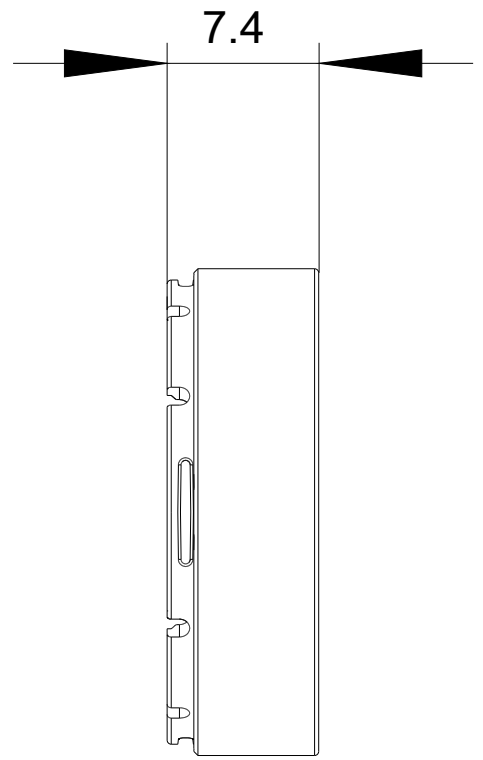
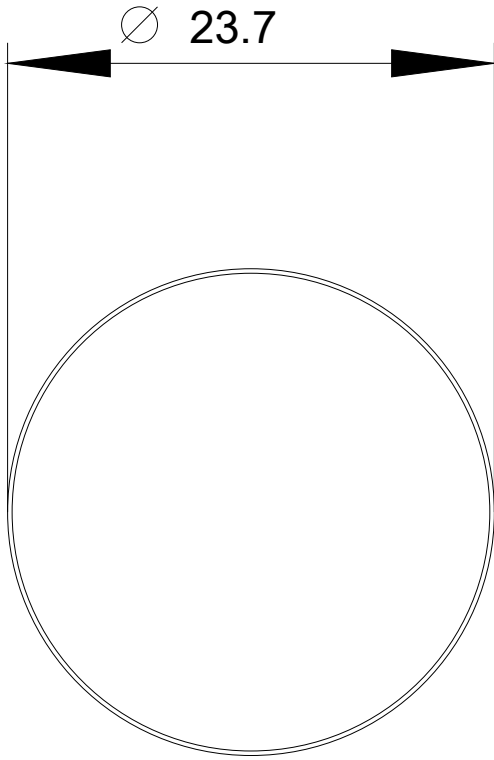
<http://support.automation.siemens.com/WW/CAXorder/default.aspx?lang=en&mlfb=3SU1900-0FS40-0AA0-Z Y19>

**Service&Support (Manuals, Certificates, Characteristics, FAQs,...)**

<https://support.industry.siemens.com/cs/ww/en/ps/3SU1900-0FS40-0AA0-Z Y19>

**Image database (product images, 2D dimension drawings, 3D models, device circuit diagrams, EPLAN macros, ...)**

[http://www.automation.siemens.com/bilddb/cax\\_de.aspx?mlfb=3SU1900-0FS40-0AA0-Z Y19&lang=en](http://www.automation.siemens.com/bilddb/cax_de.aspx?mlfb=3SU1900-0FS40-0AA0-Z Y19&lang=en)



last modified:

02/06/2020