

MLFB-Ordering data 1FG1501-5QE04-2HQ1-Z  
D14+G23+K07

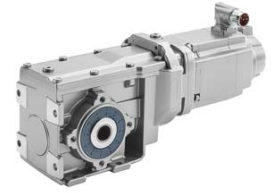


Figure similar

Client order no. :

Order no. :

Offer no. :

Remarks :

Item no. :

Consignment no. :

Project :

### Gearbox data

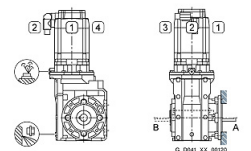
<b>Gear box type</b>	B29	<b>Radial force maximum</b>	4130 N
<b>Gearbox basic type</b>	Bevel geared	<b>Max. permissible radial force with Mmax</b>	4110 N
<b>Gearbox size</b>	29	<b>Moment of inertia</b>	0.23 kgcm <sup>2</sup>
<b>Transmission stages</b>	2	<b>Torsional stiffness</b>	13 Nm/°
<b>Transmission (ratio)</b>	16.45	<b>Efficiency</b>	0.93
<b>Gear number relation</b>	1925/117	<b>Mounting position</b>	M4-A
<b>Output moment maximum (short-time)</b>	114 Nm	<b>Mounting type</b>	Housing flange (C type)
<b>max. input speed (briefly)</b>	4500 rpm	<b>Output shaft version</b>	Hollow shaft standard
<b>Output speed short-time</b>	274 rpm	<b>Output shaft dimension</b>	H20 mm
<b>Emergency off output moment (1000 cycles)</b>	187 Nm	<b>Gearbox flange diameter</b>	-/-
		<b>Output shaft bearing</b>	No
		<b>Figure 2 torque support</b>	-

### General tech. specifications

<b>Degree of protection</b>	IP65
<b>Color of the housing</b>	Standard painting (Anthracite RAL 7016)
<b>Specification</b>	CE / UL / CSA / EAC / cRUus
<b>Net weight</b>	12.39 kg
<b>1m-sound pressure level L<sub>pA</sub> (ToI.+3dB(A))</b>	70
<b>Plug position</b>	top (default) (2)
<b>Connector size</b>	1

### Lubrication and sealing

<b>Gear oil</b>	Polyglycol oil CLP ISO PG VG220
<b>Output shaft sealing</b>	Seal longer service life
<b>Oil charge</b>	0.85 l



# SIEMENS

## Data sheet for SIMOTICS S-1FG1

MLFB-Ordering data 1FG1501-5QE04-2HQ1-Z  
D14+G23+K07

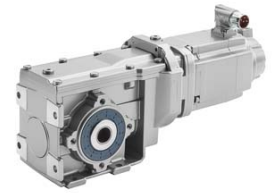


Figure similar

Motor data		Limiting data	
Motor type	Permanent-magnet synchronous motor	Maximum speed (short-time)	7200 rpm
Motor type	Compact	Maximum torque	18.00 Nm
DC-link voltage, max.	510...720V	Motor current short term	21.5 A
Shaft height	63 mm	<b>Optimum operating point</b>	
Cooling	Natural cooling	Optimum speed	4500 rpm
Rated speed	4500 rpm	Optimum power	1.55 kW
Rated torque (100K)	3.30 Nm	<b>Recommended Motor Module</b>	
Rated power	1.56 kW	Rated inverter current	9.0 A
Rated current (100K)	3.95 A	Maximum inverter current	27.0 A
Static torque	5.30 Nm	Maximum torque	18.0 Nm
Static current	5.70 A		
Moment of inertia	7.70 kgcm <sup>2</sup>		
Efficiency $\eta$	91 %		
Temperature monitoring	Pt1000 temperature sensor		
Encoder system	Encoder AS20DQI: absolute encoder single-turn 20 bits		

### Info servo geared motor

Outside the standard temperature range of -10 to +40 °C, further selectable options must be observed, in addition to the lubricant selection.

Further, you have to check the suitability of the components and options used for the requested temperature range.

# SIEMENS

## Data sheet for SIMOTICS S-1FG1

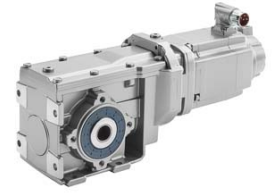


Figure similar

MLFB-Ordering data 1FG1501-5QE04-2HQ1-Z  
D14+G23+K07

### Options

D14	M4-A for bevel and worm gearboxes
G23	Seal longer service life
K07	Polyglycol oil CLP ISO PG VG220

### Standards

**Compliance with standards** CE / UL / CSA / EAC / cRUus

**CE marking** EN 60034