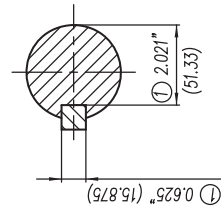


1/2"-13NC Tapped Hole for Grounding Both sides of Frame para Tierra, en ambos lados de la Carcasa

- ① Tolerancias acorde a NEMA Std.
- ② All these dimensions corresponding to assemblies and castings shall have a tolerance as per DIN standard 1686-GTB 19.
- ③ Not According to NEMA Std.



Keyseat detail
Detalle Cuñero

CERTIFIED PRINT / CERTIFICACION			
CUSTOMER/CLIENTE			
SUN/PROTEC CENTER			
IP	FRANK/ARM	TYPE/PRO	WOLTS
			REV

Tol. in mm. acc. to Tol. en mm. según DIN-1686-GTB-19	± 4.5
Over/desde To/hasta	± 4.7
18	30
30	50
50	80
80	120
120	180
180	250
250	315
315	400
400	500
500	630
630	800
	± 10

European Projection / Proyeccion Europea
Dim. in inches / Dim. en pulg.

NOTE: Changed the type of motor
NOTA: Se cambio el tipo de motor

Date/Fecha	Name/Nombre	Scale/ Escala
19/01/09	J. Carvajal	---
Drawn/Elab.	Check/Rev.	Type/ Tipo.
		3MSE 750 1282 a)
Std/Cad./Aut		Ref.
		Rep./MSE 750 1282 g)

SIEMENS
GUADALAJARA FACTORY

Outline/Dimensiones
"Short Shaft" / "Espiga Corta"
Type/ SD100 IEEE mNP FRAME/ARM. 444/445TS